



WELDING CATALOGUE 2026



Pinnacle

Pinnacle

ONE WORLD - INFINITE SOLUTIONS



WELDING



PPE & SAFETY



GENERATOR



POWER TOOLS





THE STORY OF PINNACLE

2013

Pinnacle Welding was established in 2013 as a wholesale supplier to the welding industry.

2014

Shortly thereafter, the company expanded its offerings to include its own branded welding and cutting machines, welding consumables, and accessories, marking significant growth.

2017

Pinnacle Welding acquired CHISA Welding, initiating its manufacturing operations with the production of CHISA branded welding electrodes and the well recognized Pinnacle Super 7 E6013 and other OEM welding electrodes.

2018

Pinnacle brand had evolved into Pinnacle Welding & Safety, reflecting an expanded product range to meet increasing customer demand for personal protective equipment (PPE). Today, the company offers over 1000 PPE and safety products, including locally manufactured workwear that contribute to the local economy and employment.

2023

In 2023, Pinnacle further broadened its portfolio to power generator and solar products, responding to growing needs for reliable domestic and industrial power solutions. The company now supplies a comprehensive range of Industrial diesel generators powered by SDEC, FAW, Cummins, Perkins engines and equipped with DSE controllers, available in various sizes.

2026

Pinnacle to showcase a new Power Tool division to South Africa. kicking off this exciting chapter with a robust range of DIY-grade power tools, combining accessible, cutting-edge technology with the rugged durability needed to empower ambitious home improvers and hobbyists.

Pinnacle's product brands—PINNACLE, CHISA, JASIC, and RILAND—are known for superior quality and value, with most products conforming to SABS, ISO9001, CE, and EN standards. Their products serve diverse sectors including engineering, mining, shipbuilding, agriculture, automotive, construction, petrochemical, DIY retail, and food industries.



INDEX

Welding Machines	05 - 48
- Riland Machines.....	06 - 15
- Pinnacle Machines.....	16 - 48
Welding Electrodes	49 - 56
ARC Welding Accessories	57 - 67
MIG Welding Wire	68 - 76
MIG Torch & Accessories	77 - 83
TIG Welding Wire	84 - 87
TIG Torch & Accessories	88 - 91
Brazing Wire & Flux	92 - 96
Gas Cutting & Welding	97 - 107
Plasma Torch & Accessories	108 - 114
Sub ARC Wire & Flux	115 - 116

Fun Facts About Welding

- 1. When two pieces of metal touch in space they become instantly welded together.**
Known as cold welding, bare or highly polished metals will weld themselves together immediately when the pieces touch in space. This occurs thanks to metallic bonds, which hold atoms together to create a single, solid piece of metal. Note: This cannot happen on earth.
- 2. Astounding Welding Records**
Both wet and dry welding methods can be performed under water. The current record for the deepest dry weld was set in 1990 at 327.6m deep. In order to complete a dry weld underwater, the area must be completely sealed off by a dry chamber where the weld is completed. The record for wet weld was set in 2005 by the U.S. Navy and is nearly twice as deep at 609.6m deep.
- 3. The Speed of Plasma**
Plasma arc welding and cutting aren't just powerful; they're incredibly fast. A plasma torch can reach temperatures of up to 28,000°C. To put that in perspective, that is five times hotter than the surface of the sun. This allows it to slice through conductive metals like butter.
- 4. The "Art" of TIG**
TIG (Tungsten Inert Gas) welding is often considered the most "artistic" form of welding. Because it requires using both hands—one for the torch and one for the filler rod—while often using a foot pedal to control heat, it is frequently compared to playing a musical instrument. It's the go-to method for high-precision work on spacecraft and high-performance bicycles.

INFORMATION



GMAW (Gas metal Arc Welding) Known As MIG Welding

MIG (Metal Inert Gas) welding uses a continuously fed wire electrode and shielding gas to form the weld. It's fast, easy to learn, and ideal for production work. The process produces clean welds with little slag and is commonly applied to steel, stainless steel, and aluminium.



SMAW (Shielded Manual Arc Welding) Known As MMA — Stick Welding

MMA (Manual Metal Arc) is a welding method where a consumable electrode coated in flux is used to create the weld. The flux coating produces a shielding gas and slag to protect the weld pool. It is commonly used for outdoor work and heavy-duty applications because it is simple, strong, and does not require external gas.



GTAW (Gas Tungsten Arc Welding) Known As TIG Welding

A welding process that uses a non-consumable tungsten electrode to produce the weld. An inert gas, usually argon, is used to protect the weld area from contamination. TIG welding is known for producing very clean, precise, and high-quality welds, especially on thin materials like stainless steel and aluminium.



Plasma Cutting

On The welding machine means the machine is set to plasma cutting mode, using a high-temperature plasma jet to cut metal instead of welding. It signals to connect the plasma torch and adjusts the machine for cutting.

220V

220AC Input Voltage

The machine operates on a standard single-phase electrical supply, typically found in homes and small workshops. It is suitable for light to medium-duty welding tasks.

380V

380AC Input Voltage

The machine requires a three-phase electrical supply, which provides more stable and powerful energy. It is commonly used in industrial environments where higher performance is needed.

525V

525AC Input Voltage

A heavy-duty industrial power requirement. Machines using this voltage are designed for large-scale, continuous welding operations in factories or construction sites.



ARC Force on MMA

An automatic increase of the welding current when the arc becomes too short. It helps to maintain a stable arc, improves penetration into the material, and reduces the chances of the electrode sticking during welding.



Anti Sticking on MMA

Reduces or cuts off the welding current when the electrode sticks to the workpiece. It prevents overheating and makes it easier to remove the electrode without damaging it or the material.



Hot Start on MMA

Temporarily increases the welding current at the beginning of the weld. It makes it easier to strike the arc, improves arc ignition, and ensures a smoother start, especially when working with difficult electrodes.



Over Heat Protection

The welding machine has a safety feature that automatically shuts down or reduces power when it gets too hot. This prevents damage to internal components, protects the user, and allows the machine to cool down before continuing work.



Microcontroller Unit (MCU)

The welding machine uses a digital control system to manage its operations. The MCU improves precision, efficiency, and reliability by controlling parameters.



IGBT (Insulated Gate Bipolar Transistor)

The machine uses advanced electronic components for power control. IGBT technology allows for efficient energy use, stable arc performance, reduced weight, and better overall welding quality.



AC (Alternating Current) & DC (Direct Current)

This icon means the machine can operate using both alternating current (AC) and direct current (DC). This flexibility allows it to weld a wider range of materials, such as aluminium (AC) and steel (DC).



MOSFET (Metal-Oxide -Semiconductor Field-Effect Transistor)

The MOSFET icon indicates the welder uses Metal-Oxide-Semiconductor Field-Effect Transistors for fast current switching, providing smooth arcs, stable performance, efficient power use, and a lighter, more reliable machine.



Pulse MIG/TIG Welding

The welding current in pulses rather than a constant flow. It helps reduce heat input, improves control of the weld pool, minimizes distortion, and produces cleaner welds, especially on thin materials.



Built in Air Compressor

The built-in air compressor icon on a plasma cutter means the cutter has a built-in air supply for plasma cutting. You don't need an external air source—the compressor provides the air needed for the plasma torch to cut metal.



Generator Friendly Power Input

The machine can safely run on power supplied by a generator. It is designed to handle unstable voltage and fluctuations, ensuring stable performance, reliable arc operation, and protection of internal components, especially when working in areas without mains electricity.



RICHIP

The welding machine uses a smart control chip that automatically adjusts settings like current and voltage to improve arc stability, performance, and weld quality while protecting the machine.



Synergic Welding

This advanced feature automatically adjusts welding parameters based on the selected settings. It simplifies operation by helping the user achieve the correct balance between voltage, current, and wire speed, making welding easier and more consistent, especially for beginners.

Welding Machines



RILAND

Pinnacle



RILAND FIBER LASER 1200W

Hand held fiber laser welding machine (force air cooling)

Item Code: 6-RL-HLW-1200A

Application:

- Stainless / Carbon Steel: Up to 4.0mm
- Aluminum: Up to 2.5mm
- Galvanized Sheet: Up to 3.0mm
- Copper: Up to 1.0mm

Package Includes:

- Wire Feeder
- Welding Torch

Features:

- The welding torch is light & comfortable to hold.
- 1200W Precision: High-accuracy output up to 4mm
- Air-Cooled: Compact, tankless fan-cooled system
- High Portability: Lightweight and mobile for onsite use
- Standard Power: Simple 220V single-phase compatibility



Technical Data		
Laser Power	W	1200
Laser Wavelength	NM	1080+-10
Fiber Length	M	4.5
Wire Diameter	mm	0.8 / 1 / 1.2
Welding Speed	mm/s	0 - 80
Welding Gap	mm	up to 0.5
Cooling Method		Industrial thermostatic water tank
Rated Input Voltage	V	220V AC
Rated Input Frequency	Hz	50 (support customizable 60 HZ)
Working Method		Continuous / Modulated
Working Temperature	C	up to 15 ~50
Working Humidity	%	<80% No condensation
Torch Head Weight	g	700
Product Size (L*W*H)	mm	462 x 275 x 547
Extension Function		Cutting / Cleaning

RILAND FIBER LASER 2000W

Hand held fiber laser welding machine (water cooling)

Item Code: 6-RL-HLW-2000W

Application:

- Stainless / Carbon Steel: Up to 6.0mm
- Aluminum: Up to 4.0mm
- Galvanized Sheet: Up to 4.0mm
- Copper: Up to 2.0mm

Package Includes:

- Wire Feeder
- Welding Torch

Features:

- Digital adjustable welding technology.
- 2000W Precision: High-accuracy output up to 6mm
- Water-Cooled: Compact, tankless fan-cooled system
- High Portability: Lightweight and mobile for onsite use
- Standard Power: Simple 220V single-phase compatibility



Technical Data		
Laser Power	W	2000
Laser Wavelength	NM	1070
Fiber Length	M	10
Wire Diameter	mm	0.88 / 1 / 1.2 / 1.6
Welding Speed	mm/s	0 - 120
Welding Gap	mm	up to 0.5
Cooling Method		Industrial thermostatic water tank
Rated Input Voltage	V	220V AC
Rated Input Frequency	Hz	50 (support customizable 60 HZ)
Working Method		Continuous / Modulated
Working Temperature	C	-10 ~ 40
Working Humidity	%	<70% No condensation
Torch Head Weight	g	650
Product Size (L*W*H)	mm	930 x 530 x 850
Extension Function		Cutting / Cleaning

RILAND FIBER LASER 3000W

Hand held fiber laser welding machine (water cooling)

Item Code: 6-RL-HLW-3000II

Application:

- Stainless / Carbon Steel: Up to 8.0mm
- Aluminum: Up to 5.0mm
- Galvanized Sheet: Up to 5.0mm
- Copper: Up to 3.0mm

Package Includes:

- Wire Feeder
- Welding Torch

Features:

- AC 380V - 50Hz
- 3 Phase + Neutral + Earth
- 3-in-1 Modes: Welding, Cutting & Surface Cleaning
- Wobble Torch: Adjustable beam for superior gap bridging
- 24/7 Operation: Integrated dual-cooling chiller system



Technical Data		
Laser Power	W	3000
Laser Wavelength	NM	1070
Fiber Length	M	10
Wire Diameter	mm	0.88 / 1 / 1.2 / 1.6
Welding Speed	mm/s	0 - 120
Welding Gap	mm	up to 0.5
Cooling Method		Industrial thermostatic water tank
Rated Input Voltage	V	380V AC
Rated Input Frequency	Hz	50 (support customizable 60 HZ)
Working Method		Continuous / Modulated
Working Temperature	C	-10 ~ 40
Working Humidity	%	<70% No condensation
Torch Head Weight	g	650
Product Size (L*W*H)	mm	991 x 710 x 1100
Extension Function		Cutting / Cleaning

RILAND MACHINE PARTS

Laser Welding Machine Parts	
Item Code	Description
6-R-46-032845	Laser Gun (3-in-1)
6-R-46-032594	Laser Welding Gun Protective Lense
6-R-46-032597	Laser Welding Gun Focusing Lense
6-R-46-032599	Focusing Lense For Cleaning
6-R-46-033286	Laser Welding Gun Reflective Lense
6-R-46-032610	Copper Nozzle For 3000II
6-R-46-032611	Copper Nozzle For 3000II PLUS
6-R-46-032616	Copper Nozzle For 3000II
6-R-46-032860	Double Wire Torch Guide 1.0mm
6-R-46-032861	Double Wire Torch Guide 1.2mm
6-R-46-033133	Laser Welding Nozzle 1.0mm (Double Wire Feeding)
6-R-46-033134	Laser Welding Nozzle 1.2mm (Double Wire Feeding)
6-R-46-033221	SUP22C Cleaning Gun Collimating Lense

RILAND PRODUCT SELECTION GUIDE

Recommendation	Stainless Steel	Carbon Steel	Galvanized Steel	Aluminum
1200W	0.5-3mm	0.5-3mm	0.5-2.5mm	0.5-2.5mm
2000W	0.5-4mm	0.5-4mm	0.5-3.5mm	0.5-3.5mm
3000W	0.5-6mm	0.5-6mm	0.5-5.5mm	0.5-5.5mm

RILON MIG 160E *Made By Riland*

MIG/MMA/TIG Digital Welding Machine

Item Code: 6-10RMIG01B

Application:

- Gasless MIG
- MMA
- LIFT TIG

Package Includes:

- Inverter Power Source
- MB15 MIG Torch + 3m cable
- Earth Clamp + 1.2m cable

Features:

- Exclusive Tech: Featuring the high-performance RICHIP
- Clean Welds: Smooth control, less cleanup
- Built-In Safety: Automatic overload shut-off
- Easy Setup: Precise digital display
- Ultra-Portable: Fits standard 1kg (100mm) wire



Technical Data

Rated Input Voltage	V	220V AC ~+- 15%
Rated Frequency	Hz	50 / 60
Rated Input Current	A	MIG: 13.8A MMA: 14.5A
Output Current Range	A	MIG: 30-120A MMA: 30-80A
Output Voltage Range	V	MIG: 15.5-20V MMA: 21.2-23.2V
Duty Cycle (25°C)	%	MIG: 60% @ 120A MMA: 60% @ 80A
Power Factor		0.62
Open Circuit Voltage	V	55V
Efficiency	%	82%
Wire Size	mm	0.8-1.0mm
Wire Feeder Type		Internal
Insulation Class		F
Protection Class	IP	IP21

RILAND MMA 202GDM

MMA/TIG Light Industrial Welding Machine

Item Code: 6-10RMMA02

Application:

- MMA
- LIFT TIG

Package Includes:

- Inverter Power Source
- Electrode Holder + 1.8m cable
- Earth Clamp + 1.2m cable

Features:

- 220V/200A Power: High-output performance on standard power
- Digital Control: Adjustable VRD and selectable electrode types
- Smart Arc Tuning: Built-in Hot Start, Arc Force, and Anti-Stick
- Continuous Duty: Non-stop welding for 2.5mm–3.2mm rods
- Adaptive Cooling: Fan-on-demand reduces noise and dust



Technical Data		
Rated Input Voltage	V	220V AC ~+- 15%
Rated Frequency	Hz	50/60Hz
Rated Input Current	A	MMA: 38.7A TIG: 24.7A
Output Current Range	A	MMA: 40-190A TIG: 10-190A
20-25% Output Current/Voltage/Duty Cycle	V	MMA: 190A/27.6V/20% TIG: 190A/17.6V/25%
100% Output Current/Voltage/Duty Cycle	V	MMA: 95A/23.8V/100% TIG: 95A/13.8V/100%
Electrode Size	mm	2.5-4mm
No Load Voltage	V	MMA: 64V/16V VRD TIG: 64V/16V VRD
Dimensions	mm	288mm x 126mm x 234mm
Weight	kg	4,3kg

RILAND MIG 250GS

MIG/MMA Industrial Welding Machine

Item Code: 6-10RMIG02

Application:

- MIG
- MMA
- Gasless MIG (Flux-Cored)

Package Includes:

- Inverter Power Source
- MB25 MIG Torch + 4m cable
- Earth Clamp + 3m cable

Features:

- High Output: Operates at 220V with a 250A welding capacity
- Advanced IGBT Inverter for high-efficiency power
- Total Arc Control: Fine-tune settings to eliminate spatter
- User-Friendly: Built-in wire inching and easy polarity changes
- Heavy-Duty: Accommodates large 15kg (300mm) wire spools



Technical Data		
Rated Input Voltage	V	220V AC ~+- 15%
Rated Frequency	Hz	50 / 60
Rated Input Current	A	MIG: 50A MMA: 47A
Output Current Range	A	MIG: 50-250A MMA: 50-220A
Output Current/Voltage Range/Duty Cycle 35%		MIG: 250A/26.5 MMA: 220A-28.8V
Output Current/Voltage Range/Duty Cycle 100%		MIG: 180A/23V MMA: 160A/26.4V
Open Circuit Voltage	V	56V
Wire Size	mm	0.8-1.6m
Wire Feeder Type		Internal
Dimensions	mm	615mm x 276mm x 760mm
Weight	kg	45kg

RILAND MIG 350GF

MIG/MMA Heavy Industrial Welding Machine

Item Code: 6-10RMIG03

Application:

- MIG/MIX
- MMA
- Gasless MIG (Flux-Cored)

Package Includes:

- Inverter Power Source
- MB36 MIG Torch + 4m cable
- Earth Clamp + 3m cable
- External Wire Feeder (with interconnecting cables)

Features:

- 350A Power: 60% duty cycle for heavy industrial use
- 380V 3-Phase: High-efficiency input for stable fabrication
- Multi-Process: Supports MIG, MMA (Stick), and Arc Gouging
- External Feeder: Separated wire feeder for extended reach
- IGBT Control: Reliable 2T/4T modes with adjustable inductance



**Supply Cable is not included in the package



Technical Data		
Rated Input Voltage	V	380V AC ~+- 15%
Rated Frequency	Hz	50 / 60
Rated Input Current	A	MIG: 24A MMA: 25.8A
Output Current Range	A	MIG: 60-350A MMA: 40-350A
Output Voltage Range	V	MIG: 17-31.5V MMA: 21.6-34V
Duty Cycle (25'C)	%	MIG: 60% MMA: 60%
Power Factor		0.93
Open Circuit Voltage	V	61V
Efficiency	%	85%
Wire Size	mm	0.8-1.2mm
Wire Feeder Type		Separated
Insulation Class		F
Protection Class	IP	IP21

RILAND MIG 500GF

MIG/MMA Heavy Industrial Welding Machine

Item Code: 6-10RMIG04

Application:

- MIG/MIX
- MMA
- Gasless MIG (Flux-Cored)

Package Includes:

- Inverter Power Source
- MB40 MIG Torch + 4m cable
- Earth Clamp + 3m cable
- External Wire Feeder (with interconnecting cables)

Features:

- 500A/380V 3Ph: Industrial power for heavy steel and gouging
- Separated Feeder: Detached unit for maximum mobility
- Multi-Process: Supports MIG, MMA (Stick), and Arc Gouging
- External Feeder: Separated wire feeder for extended reach
- IGBT Control: Reliable 2T/4T modes with adjustable inductance



**Supply Cable is not included in the package



Technical Data		
Rated Input Voltage	V	380V AC ~+- 15%
Rated Frequency	Hz	50 / 60
Rated Input Current	A	MIG: 31.2A MMA: 31.8A
Output Current Range	A	MIG: 60-450A MMA: 60-450A
Output Voltage Range	V	MIG: 17-36.5V MMA: 22.4-38V
Duty Cycle (25'C)	%	MIG: 60% MMA: 60%
Power Factor		0.93
Open Circuit Voltage	V	61V
Efficiency	%	85%
Wire Size	mm	0.8-1.2mm
Wire Feeder Type		Separated
Insulation Class		F
Protection Class	IP	IP21

RILAND TIG 250PAC/DC II

TIG/MMA Industrial Welding Machine

Item Code: 6-10RTIG03

Application:

- AC & DC TIG
- Pulse TIG
- MMA
- Remote Control

Package Includes:

- Inverter Power Source
- WP26V TIG Torch + 4m cable
- Earth Clamp + 3m cable
- Tungsten Electrode

Features:

- AC/DC operation with selectable 2T/4T trigger modes
- Adjustable post-gas and down-slope control
- Adjustable pulse frequency and width
- AC balance for improved aluminum welding
- Strong output: 250A at 220V for versatile use



Item Code
Foot Control - 6-10RTIG11
*Optional

Technical Data		
Rated Input Voltage	V	220V AC ~+- 15%
Rated Frequency	Hz	50 / 60
Rated Input Current	A	TIG: 36.5A MMA: 35.4A
Output Current Range	A	TIG: 10-210A MMA: 10-160A
Output Current/Voltage/Duty Cycle 30-40%		TIG: 210A / 18.4V MMA: 160A / 26.4V
Output Current/Voltage/Duty Cycle 100%		TIG: 150A / 16V MMA: 120A / 24.8V
Open Circuit Voltage	V	TIG: 96V(AC)/68V(DC) MMA: 60V
Dimensions	mm	476 x 340 x 402mm
Weight	kg	20kg

PRIMIARC 201VRD

MMA/TIG Industrial Welding Machine

Item Code: 6-100105

Application:

- MMA
- LIFT TIG

Package Includes:

- Inverter Power Source
- Electrode Holder + 1.8m Cable
- Earth Clamp + 1.2m Cable

Features:

- Advanced IGBT module technology for stable performance
- Industrial-grade build; compact and lightweight design
- 220V input with 200A output capacity
- Preset Arc Force, Hot Start & Anti-stick functions
- VRD safety function with wide electrode compatibility (carbon steel, stainless steel, copper, alloy steel)



Technical Data

Technical Data		
Rated Input Voltage	V	220V AC ~ +- 15%
Rated Frequency	Hz	50 / 60
Open Circuit Voltage	V	65V (VRD Off)
Rated Input Current	A	38A
Output Welding Current Range	A	20-200A
Rated Duty Cycle (25°C)	%	100%
Electrode Size	mm	2.5-4mm
Dimensions	mm	360 x 160 x 212mm
Weight	kg	9kg

PROARC 280D

MMA Welding Machine

Item Code: 6-PROA021

Application:

- MMA
- LIFT TIG

Package Includes:

- Inverter Power Source
- Electrode Holder + 1.8m Cable
- Earth Clamp + 1.2m Cable

Features:

- 220V, 250A, 8.8kW – Generator-ready for heavy duty use
- IGBT inverter delivers efficient, stable arcs
- Hot Start & Arc Force to ensure smooth ignition without sticking
- LCD display provides clear digital control
- Overheat protection keeps the machine safe during long sessions



Technical Data

Technical Data		
Rated Input Voltage	V	220V AC ~ +- 15%
Rated Frequency	Hz	50 / 60
Open Circuit Voltage	V	60V
Rated Input Power	KW	8.8KW
Output Welding Current Range	A	20-220A
Rated Duty Cycle (25'C)	%	60%
Efficiency	n	85%
Electrode Size	mm	1.6 - 5.0mm
Weight	kg	8.8kg
Protection Class	IP	IP21S

PROARC 400I DUAL

MMA Welding Machine (380V/525V)

Item Code: 6-PROA04

Application:

- MMA
- LIFT TIG

Package Includes:

- Inverter Power Source
- Electrode Holder + 1.8m Cable
- Earth Clamp + 1.2m Cable

Features:

- IGBT Module Technology for dependable performance
- Welding cable extension up to 100m
- Stable 380V input with 400A output
- Adjustable Hot Start and Arc Force
- Built-in protection: over-current, over-heat, low voltage, & fault



**Supply Cable is not included in the package



Technical Data		
Rated Input Voltage	V	380V/525V AC ~ +- 15%
Rated Frequency	Hz	50 / 60
Open Circuit Voltage	V	65V
Rated Input Current	A	18A
Output Welding Current Range	A	40-320A
Rated Duty Cycle (25°C)	%	60%
Efficiency	n	85%
Power Factor	Cosp	0.93
Insulation Class		H
Protection Class	IP	IP21S

PROARC 400I

MMA Industrial Inverter Welding Machine

Item Code: 6-PROA03

Application:

- MMA
- LIFT TIG

Package Includes:

- Inverter Power Source
- Electrode Holder + 1.8m Cable
- Earth Clamp + 1.2m Cable

Features:

- IGBT Module Technology for dependable performance
- Welding cable extension up to 100m
- Stable 380V input with 320A output
- Adjustable Hot Start and Arc Force
- Built-in protection: over-current, over-heat, low voltage, & fault



**Supply Cable is not included in the package



Technical Data		
Rated Input Voltage	V	380V AC ~+- 15%
Rated Frequency	Hz	50 / 60
Open Circuit Voltage	V	65V
Rated Input Current	A	18A
Output Welding Current Range	A	40-320A
Rated Duty Cycle (25°C)	%	60%
Efficiency	n	85%
Power Factor	Cosφ	0.93
Insulation Class		H
Protection Class	IP	IP21S

PROARC 630I

MMA Industrial Inverter Welding Machine

Item Code: 6-PROA06

Application:

- MMA
- LIFT TIG

Package Includes:

- Inverter Power Source
- Electrode Holder + 1.8m Cable
- Earth Clamp + 1.2m Cable

Features:

- 380V input with 500A output for heavy-duty power
- IGBT technology ensures efficient, reliable performance
- Hot Start & Arc Force give quick ignition and stable arcs
- Digital display provides precise parameter control
- Overheat protection keeps operation safe and durable



**Supply Cable is not included in the package



Technical Data		
Rated Input Voltage	V	380V AC ~ +- 15%
Rated Frequency	Hz	50 / 60
Open Circuit Voltage	V	75V
Rated Input Current	A	39A
Output Welding Current Range	A	40-500A
Rated Duty Cycle (25°C)	%	60%
Efficiency	n	85%
Power Factor	Cosφ	0.93
Insulation Class		H
Protection Class	IP	IP21S

PROCUT 40ET

Industrial Air Plasma Cutting Machine

Item Code: 6-PROC01

Application:

- Plasma Cutting

Package Includes:

- Inverter Power Source
- PT-31 Plasma Cutting Torch + 5m Cable
- Earth Clamp + 3m Cable

Features:

- Compact design for easy handling
- High cutting precision and smooth finish
- Durable build for long service life
- Efficient performance with low maintenance needs
- Operates on 220V, delivering 40A power



Technical Data		
Rated Input Voltage	V	220V AC ~+- 15%
Rated Frequency	Hz	50 / 60
Rated Input Power	KV	5.8
Open Circuit Voltage	V	270V
Rated Input Current	A	25.2A
Cutting Current Range	A	15-40A
Rated Duty Cycle (25°C)	%	60%
Efficiency	n	75%
Power Factor	Cosφ	0.85
Post Gas Time	s	7-10s
Cutting Thickness	mm	0.1-8mm (MAX 15mm)
Insulation Class		H
Protection Class	IP	IP21S

PROCUT 60DW

Industrial Air Plasma Cutting Machine (220V/380V)

Item Code: 6-PROC01A

Application:

- Plasma Cutting

Package Includes:

- Inverter Power Source
- P-60(SG55) Plasma Cutting Torch + 5m Cable
- Earth Clamp + 3m Cable

Features:

- Dual Voltage 220V/380V, 60A power for versatile cutting
- IGBT Full Bridge for stable, efficient performance
- Fault Code Display for quick diagnostics
- Post-Gas Adjustment for cleaner cuts
- Built-in protection against over-current, heat, and low voltage



**Supply Cable is not included in the package



Technical Data		
Rated Input Voltage	V	220V/380V +- 15%
Rated Frequency	Hz	50 / 60
Rated Input Power	KV	9kVA
Output No-Load Voltage	V	270V
Cutting Current Range	A	30-60A
Rated Duty Cycle (25°C)	%	60%
Gas		Compressed Air
Power Factor	Cosφ	0.93
Cutting Thickness	mm	10-20mm
Insulation Class		H
Protection Class	IP	IP21S

PROCUT 80IR

Industrial Air Plasma Cutting Machine

Item Code: 6-PROC02

Application:

- Plasma Cutting
- CNC

Package Includes:

- Inverter Power Source
- PT-80 Plasma Cutting Torch + 5m Cable
- Earth Clamp + 3m Cable

Features:

- IGBT Full Bridge design for stable performance
- Equipped with CNC interface option
- Fault code alarm with clear display
- Supports 380V input, delivers 80A output power
- Cuts up to 30mm, pierces up to 25mm with precision



**Supply Cable is not included in the package



Technical Data		
Rated Input Voltage	V	380V +- 15%
Rated Frequency	Hz	50 / 60
Rated Input Power	KV	13.2
Output No-Load Voltage	V	320V
Cutting Current Range	A	30-80A
Rated Duty Cycle	%	60% (40°)
Efficiency	n	85%
Power Factor	Cosφ	0.93
Cutting Thickness	mm	10-20mm
Insulation Class		H
Protection Class	IP	IP21S

PROCUT 100IR

Air Plasma Cutting Machine

Item Code: 6-PROC03

Application:

- Plasma Cutting
- CNC

Package Includes:

- Inverter Power Source
- PT-80 Plasma Cutting Torch + 5m Cable
- Earth Clamp + 3m Cable

Features:

- 100A output on 380V power for heavy-duty performance
- IGBT full bridge design ensures stable, efficient cutting
- CNC interface ready for automated precision
- Fault alarm & protection from over-current, heat, & low voltage
- Cuts up to 30mm, pierces 25mm with consistent quality



**Supply Cable is not included in the package



Technical Data		
Rated Input Voltage	V	380V +- 15%
Rated Frequency	Hz	50 / 60
Rated Input Power	KV	14
Output No-Load Voltage	V	320V
Cutting Current Range	A	30-100A
Rated Duty Cycle	%	60% (40°)
Efficiency	n	85%
Power Factor	Cosp	0.93
Cutting Thickness	mm	15-30mm
Insulation Class		H
Protection Class	IP	IP21S

PROCUT 160

Industrial Air Plasma Cutting Machine

Item Code: 6-PROC04

Application:

- Plasma Cutting

Package Includes:

- Inverter Power Source
- PT-80 Plasma Cutting Torch + 6m Cable
- Earth Clamp + 3m Cable

Features:

- 100A output on 380V power for heavy-duty performance
- IGBT full bridge design ensures stable, efficient cutting
- CNC interface ready for automated precision
- Fault alarm & protection from over-current, heat, & low voltage
- Cuts up to 60mm, pierces 40mm with consistent quality



**Supply Cable is not included in the package



Technical Data		
Rated Input Voltage	V	380V AC~ +- 15%
Rated Frequency	Hz	50
Output Rated Open Circuit Voltage	V	310
Output Cutting Current	A	30 ~160
Quality Cutting Thickness	mm	40 (Carbon Steel)
Max Cutting Thickness	mm	60 (Carbon Steel)
Recommended Cutting Pressure	Kg/cm2	4-6
Rated Duty Cycle	%	60%
Humidity	%	<=90 (No Water Condensation)
Power Factor	Cosp	0.9
Operating Temperature	'C	-10 ~+40
Cooling Mode		Forced Air Cooling
Insulation Class		H
Protection Class	IP	IP21S

PROMIG 350C

MIG/MMA Synergic Industrial Welding Machine

Item Code: 6-PROM022

Application:

- MIG/MIX
- Gasless MIG (Flux-Cored)
- MMA

Package Includes:

- Inverter Power Source
- MB36 MIG Torch + 4m Cable
- Earth Clamp + 3m Cable

Features:

- Syn-Digital inverter technology for stable 380V welding
- Digital control with VRD and 2T/4T/S4T modes
- Strong 350A output for efficient, low-spatter welds
- Hot Start, Anti-Stick, & Arc Force functions built-in
- Full protection against over-current, heat, low voltage, & faults



**Supply Cable is not included in the package



Technical Data

Technical Data		
Rated Input Voltage	V	380V AC ~+- 15%
Rated Frequency	Hz	50 / 60
Rated Input power	KV	9.2KV
Rated Input Current	A	40A
Output Voltage Range	V	15-28V
Output Current Range	A	50-350A
Rated Duty Cycle	%	60%
Efficiency	%	85%
Wire Feeder		Internal
Wire Size	mm	0.8-1.2mm
Insulation Class		F
Protection Class	IP	IP21

PROMIG 350I

MIG/MMA Digital Industrial Welding Machine

Item Code: 6-PROM03

Application:

- MIG
- Gasless MIG (Flux-Cored)
- MMA

Package Includes:

- Inverter power source
- MB36 MIG Torch + 4m Cable
- Earth Clamp + 3m Cable
- Trolley & Undercarriage (Combined with Machine)
- External Wire Feeder (with interconnecting cables)

Features:

- IGBT full bridge design for stable performance
- High-speed welding with minimal spatter
- Precise waveform control using UWC algorithm
- Fully digital system with user-friendly interface
- Robot-ready welding port for automated integration



**Supply Cable is not included in the package



Technical Data		
Rated Input Voltage	V	380V AC ~+- 15%
Rated Frequency	Hz	50 / 60
Rated Input power	KV	14KV
Rated Input Current	A	23A
Input Voltage Range	V	12-40V
Output Current Range	A	40-350A
Rated Duty Cycle	%	350A/31.5V - 100%
No Load Voltage	V	70V
Gas Flow	L/min	15 ~ 20
Wire Size	mm	0.8-1.2mm
Insulation Class		H
Protection Class	IP	IP21S

PROMIG 500I

MIG/MMA Digital Industrial Welding Machine

Item Code: 6-PROM04

Application:

- MIG
- Gasless MIG (Flux-Cored)
- MMA

Package Includes:

- Inverter power source
- MB40 MIG Torch + 4m Cable
- Earth Clamp + 3m Cable
- Trolley & Undercarriage (Combined with Machine)
- External Wire Feeder (with interconnecting cables)

Features:

- IGBT full bridge design for consistent performance
- High-speed welding with minimal spatter
- Precise waveform control using UWC algorithm
- 380V, 500A digital system with user-friendly interface
- Robot-ready welding port for automated integration



**Supply Cable is not included in the package



Technical Data		
Rated Input Voltage	V	380V AC ~+- 15%
Rated Frequency	Hz	50 / 60
Rated Input power	KV	24KV
Rated Input Current	A	40A
Input Voltage Range	V	12-50V
Output Current Range	A	50-500A
Rated Duty Cycle	%	500A/39V - 100%
No Load Voltage	V	80V
Gas Flow	L/min	15 ~ 20
Wire Size	mm	0.8-1.6mm
Insulation Class		H
Protection Class	IP	IP21S

PROMIG 500HP DUAL

MIG/MMA PULSE Industrial Welding Machine 380V/525V

Item Code: 6-PROM06

Application:

- MIG
- Gasless MIG (Flux-Cored)
- MMA

Package Includes:

- Inverter power source
- MB40 MIG Torch + 4m Cable
- Earth Clamp + 3m Cable
- Trolley & Undercarriage (Combined with Machine)
- External Wire Feeder (with interconnecting cables)

Features:

- Advanced IGBT Full Bridge Module design
- Digital pulse control ensures low spatter welding
- Single Pulse Welding capability for precision
- Stable current with output charged reactance
- Dual Voltage 380V / 525V, delivering up to 500A power



**Supply Cable is not included in the package



Technical Data		
Rated Input Voltage	V	380V/525V AC ~ +- 15%
Rated Frequency	Hz	50 / 60
Rated Input power	KV	24KV
Rated Input Current	A	25A
Output Voltage Range	V	12-50V
Output Current Range	A	40-500A
Rated Duty Cycle	%	100%
Efficiency	n	85%
Power Factor	Cosφ	0.93
Wire Size	mm	1.0-1.6mm
Insulation Class		H
Protection Class	IP	IP21S

PROTIG 200P

PULSE TIG/MMA Industrial Welding Machine

Item Code: 6-PROT011

Application:

- TIG
- MMA

Package Includes:

- Inverter power source
- WP-17V TIG Torch + 4m Cable
- Earth Clamp + 1.5m Cable
- Electrode Holder + 1.5m Cable

Features:

- Advanced IGBT & MCU technology for stable performance
- Full pulse control with adjustable cleaning functions
- 220V input delivering up to 200A welding power
- Built-in VRD safety plus 2T/4T torch modes
- Professional parameter settings with optional foot pedal



Technical Data		
Rated Input Voltage	V	220V +- 15%
Rated Frequency	Hz	50 / 60
Output No-Load Voltage	V	12V (W/ VRD) 60V (W/O VRD)
Rated Input Current	A	35A
Welding Current Range	A	MMA 20-160A TIG 100-200A
Rated Duty Cycle	%	60%
Efficiency	n	85%
Power Factor	Cospq	0.85
Insulation Class		F
Protection Class	IP	IP21S
Arc Strike Way	HF	HF
Electrode Size	mm	1.6-4.0mm
TIG Electrode Size	mm	1.0-3.2mm

PROTIG 200P AC/DC

AC/DC PULSE TIG/MMA Industrial Welding Machine

Item Code: 6-PROT02

Application:

- TIG
- MMA

Package Includes:

- Inverter power source
- WP-26V TIG Torch + 4m Cable
- Earth Clamp + 1.5m Cable

Features:

- Advanced IGBT module technology for stable performance
- Operates at 220V with up to 200A output
- Hot start and ARC force functions built-in
- Adjustable current preset and post-gas control
- Equipped with full protection and optional foot pedal



Technical Data		
Rated Input Voltage	V	220V +- 15%
Rated Frequency	Hz	50 / 60
Output No-Load Voltage	V	68V
Rated Input Current	A	28A
Welding Current Range	A	5-200A
Rated Duty Cycle	%	60%
Efficiency	n	80%
Power Factor	Cosφ	0.73
Insulation Class		H
Protection Class	IP	IP21S
Arc Strike Way	HF	HF
Electrode Size	mm	1.6-4.0mm

PROTIG 200 AC/DC

AC/DC TIG/MMA Industrial Welding Machine (NO PULSE)

Item Code: 6-PROT021

Application:

- TIG
- MMA

Package Includes:

- Inverter power source
- WP-26V TIG Torch + 4m Cable
- Earth Clamp + 1.5m Cable

Features:

- AC mode for aluminium welding
- DC mode for steel & stainless steel
- 220V input with 200A output capacity
- Smooth arc control with adjustable post-flow
- Arc force boost for enhanced MMA performance



Technical Data		
Rated Input Voltage	V	230V +- 15%
Rated Frequency	Hz	50 / 60
Output No-Load Voltage	V	68V
Rated Input Current	A	28A
Welding Current Range	A	5-200A
Rated Duty Cycle	%	60%
Efficiency	n	80%
Power Factor	Cosp	0.73
Insulation Class		H
Protection Class	IP	IP21S
Arc Strike Way	HF	HF
Electrode Size	mm	1.6-4.0mm

PROTIG 315P AC/DC

AC/DC PULSE TIG/MMA Industrial Welding Machine

Item Code: 6-PROT03

Application:

- TIG
- MMA

Package Includes:

- Inverter power source
- WP-26V TIG Torch + 4m Cable
- Earth Clamp + 1.5m Cable

Features:

- Pulse AC/DC TIG welding for aluminium, steel & stainless steel
- IGBT module technology for stable performance
- 380V input with 315A output capacity
- Hot start & ARC force functions built-in
- Comprehensive protection: over-current, over-heat, under-voltage



**Supply Cable is not included in the package



Technical Data		
Rated Input Voltage	V	380V +- 15%
Rated Frequency	Hz	50 / 60
Output No-Load Voltage	V	67.5V
Rated Input Current	A	13.6A
Welding Current Range	A	5-315A
Rated Duty Cycle	%	60%
Efficiency	n	85%
Power Factor	Cosφ	0.93
Insulation Class		H
Protection Class	IP	IP21S
Arc Strike Way	HF	HF
Electrode Size	mm	1.6-5.0mm

PRIMIMIG 251C

MIG/MMA/LIFT TIG Welding Machine

Item Code: 6-100120

Application:

- MIG
- Gasless MIG (Flux-Cored)
- MMA
- LIFT TIG

Package Includes:

- Inverter Power Source
- MB25 MIG Torch + 4m Cable
- Earth Clamp + 1.5m Cable
- Argon Flowmeter

Features:

- Operates on 220V power supply with 250A output capacity
- Heavy-duty design for industrial and workshop use
- Smooth arc performance with stable wire feed control
- Versatile MIG welding suitable for a wide range of metals
- Reliable build with user-friendly controls for consistent results



Technical Data		MIG	MMA
Rated Input Voltage	V	220V +- 15%	
Rated Frequency	Hz	50 / 60	
Rated Input Power Capacity	kVA	8,4	9,5
Rated Input Current	A	38A	43A
No-Load Voltage	V	52V	
Output Current Range	A	20-250A	
Duty Cycle	%	60% @ 40'C	
Welding Wire Size	mm	0.6 - 1.2mm	
Welding Electrode Size	mm	2.0 - 4.0mm	
Weight	Kg	20kg	
Dimension	mm	622 x 280 x 450	

MIGARC 200

Digital Synergic MIG/MMA Welding Machine

Item Code: 6-1001191

Application:

- MIG
- Gasless MIG (Flux-Cored)
- MMA
- LIFT TIG

Package Includes:

- Inverter Power Source
- MB15 MIG Torch + 4m Cable
- Earth Clamp + 1.5m Cable
- Electrode Holder + 1.5m Cable

Features:

- Single-phase, 220V portable digital inverter welder with fan cooling
- Delivers up to 200A output for versatile welding performance
- Easy-to-use microprocessor panel ensures precise control
- Compact, lightweight design with high duty cycle
- Synergic control with 9 preset welding models



Technical Data		MIG	MMA	LIFT TIG
Rated Input Voltage	V		AC 220V +- 15%	
Rated Frequency	Hz		50 /60	
Output No-Load Voltage	V		52	
Rated Input Current	A	27	24.5	15
Welding Current Range	A	20-200A	20-160A	20-160A
Rated Duty Cycle	%		60% @40°C	
Rated Input Power Capacity	KVA	6	5.4	3.3
Welding Wire Size	mm	0.6-1.0		
Welding Electrode Size	mm		2.0-3.2	1.6-2.0
Weight	KG		13	
Dimension	mm		525 x 380 x 380	

MIGARC 145

MIG/MMA/ LIFT TIG Dual Inverter Welding Machine

Item Code: 6-10011910

Application:

- Gasless MIG (Flux-Cored)
- MMA
- LIFT TIG

Package Includes:

- Inverter Power Source
- MB15 MIG Torch + 3m Cable
- Earth Clamp + 1.5m Cable

Features:

- Compact, lightweight design for easy portability
- User-friendly controls for quick setup and operation
- Runs on 220V power supply with up to 120A output
- Delivers smooth, stable arc for quality welds
- Versatile performance suitable for DIY and light industrial use



Technical Data		
Rated Input Voltage	V	AC 220V +- 15%, 1PH
Rated Frequency	Hz	50 / 60
No-Load Voltage	V	56V
Rated Input Power	KW	1.8KW
Welding Current Range	A	MIG 20-120A MMA 20-100A TIG 20-100A
Rated Duty Cycle	%	25% @ 120Amp
Electrode Size	mm	1.6 / 2.0 / 2.5 / 3.2mm
Welding Wire Size	mm	0.6 / 0.8 / 0.9 / 1.0mm
Weight	kg	5.3
Dimension	mm	320x165x230

MIGARC 165

MIG/MMA/ LIFT TIG Dual Inverter Welding Machine

Item Code: 6-10011911

Application:

- MIG
- Gasless MIG (Flux-Cored)
- MMA

Package Includes:

- Inverter Power Source
- MB15 MIG Torch + 4m Cable
- Earth Clamp + 1.5m Cable
- Electrode Holder + 1.5m Cable



Features:

- High-performance DIY-grade MIG welder
- Compact, lightweight design for easy handling
- Dual digital display for precise control
- Operates on 220V with 160A output
- Supports flux-cored wire; 1kg spool



Technical Data		
Rated Input Voltage	V	220V +- 15%
Rated Frequency	Hz	50 / 60
Output No-Load Voltage	V	56V
Welding Current Range	A	30-160A
Rated Duty Cycle (25'C)	%	60%
Rated Power Capacity	KVA	4,4
Wire Size	mm	0.6/0.8
Electrode Size	mm	2.0 / 2.5
Weight	Kg	8
Dimension	mm	350x180x220

MIGARC 195

MIG/MMA/ LIFT TIG Dual Inverter Welding Machine

Item Code: 6-1001192

Application:

- MIG
- Gasless MIG (Flux-Cored)
- MMA

Package Includes:

- Inverter Power Source
- MB15 MIG Torch + 4m Cable
- Earth Clamp + 1.5m Cable
- Electrode Holder + 1.5m Cable

Features:

- DIY-grade MIG welder with strong performance
- Compact, lightweight design for easy portability
- Dual digital display for accurate settings
- Runs on 220V with 190A output
- Supports flux-cored wire; 5kg spool capacity



Technical Data		
Rated Input Voltage	V	220V +- 15%
Rated Frequency	Hz	50 / 60
Output No-Load Voltage	V	56V
Welding Current Range	A	30-190A
Rated Duty Cycle (25'C)	%	60%
Rated Power Capacity	KVA	7.1
Wire Size	mm	0.6 / 0.8 / 0.9
Electrode Size	mm	2.0 / 2.5 / 3.2
Weight	Kg	10kg
Dimension	mm	505 x 280 x 375

MIGARC 225

MIG/MMA/ LIFT TIG Dual Inverter Welding Machine

Item Code: 6-1001193

Application:

- MIG
- Gasless MIG (Flux-Cored)
- MMA
- LIFT TIG

Package Includes:

- Inverter Power Source
- MB15 MIG Torch + 4m Cable
- Earth Clamp + 1.5m Cable
- Electrode Holder + 1.5m Cable



Features:

- Advanced MIG welder built for versatile use
- Runs on 220V with 220A output
- Welds MIG (gas/no-gas), ARC & TIG
- Compact, lightweight, fan-cooled digital inverter design
- Supports 5kg & 15kg MIG wire spools



Technical Data		
Rated Input Voltage	V	220V +- 10%
Rated Frequency	Hz	50 / 60
Output No-Load Voltage	V	56V
Welding Current Range	A	30-220A
Rated Duty Cycle	%	60%
Rated Power Capacity	KVA	7.1
Wire Size	mm	0.6 / 0.8 / 0.9 / 1.0mm
Electrode Size	mm	2.0 / 2.5 / 3.2mm
Weight	Kg	17.5kg
Dimension	mm	555 x 29 x 385

INTRUARC 143 COMBO

MMA Inverter Welding Machine

Item Code: 6-100080

Application:

- MMA

Package Includes:

- Inverter Welding Machine
- Auto Darkening Welding Helmet
- ARC 1.5m Cable Set
- 10PCS Welding Rods
- Carry Case
- Carry Strap

Features:

- MMA
- 220V power supply, up to 120A output
- Digital synergic panel with auto-adjust settings
- IGBT inverter with arc stability and smart protection
- Compact 5.2kg design, IP21 safety-certified



Technical Data		
Rated Input Voltage	V	AC 230V +- 10%
Rated Frequency	Hz	50
Output No-Load Voltage	V	60
Rated Input Current	A	18
Welding Current Range	A	20-120
Rated Duty Cycle	%	30%
Rated Input Power Capacity	KVA	4,5
Welding Electrode Size	mm	1.6 - 3.2
Weight	KG	5.2
Dimension	mm	500 x 390 x 180

GENE ARC 223 COMBO

MMA Inverter Welding Machine

Item Code: 6-100081

Application:

- MMA
- LIFT-TIG

Package Includes:

- Inverter Welding Machine
- Solar Welding Helmet
- ARC 1.5m Cable Set
- Carry Case

Features:

- Dual welding modes: MMA and TIG for versatile use
- Strong performance with 200A output on 220V supply
- Lightweight design for easy portability
- Complete package with helmet, cables, rods, and carry case
- Reliable 40% duty cycle for consistent operation



Technical Data		
Rated Input Voltage	V	AC 220V +- 15%
Rated Frequency	Hz	50 / 60
Output No-Load Voltage	V	65
Rated Input Current	A	45
Welding Current Range	A	20-200
Rated Duty Cycle	%	40%
Rated Input Power Capacity	KVA	5,3
Welding Electrode Size	mm	2.5/3.2/4.0
Weight	KG	8
Dimension	mm	500 x 390 x 180

WAK CAMO

MMA/LIFT TIG Inverter Welding Machine

Item Code: 6-100102

Application:

- MMA
- LIFT TIG

Package Includes:

- Inverter Power Source
- Earth Clamp + 1.5m Cable
- Electrode Holder + 1.5m Cable

Features:

- Compact inverter design for easy portability
- Delivers strong 200A output on 220V power supply
- Stable arc performance with smooth weld finish
- Energy-efficient technology reduces power consumption
- Rugged camo casing built for durability in tough environments



Technical Data

Technical Data		
Rated Input Voltage	V	AC 220V +- 15%
Rated Frequency	Hz	50 / 60
Output No-Load Voltage	V	65
Rated Input Current	A	48
Welding Current Range	A	20-200A
Rated Duty Cycle	%	60% @ 200A
Rated Input Power Capacity	KVA	6,5
ARC Force	A	0-100
Welding Electrode Size	mm	2.5 - 4.0
Weight	KG	8
Dimensions	mm	360 x 160 x 212

RILON MMA 120E *Made By Riland*

MMA Welding Machine

Item Code: 6-11RL01

Application:

- MMA

Package Includes:

- Inverter Power Source
- Electrode Holder + 1.5m cable
- Earth Clamp + 1.2m cable



Features:

- Supports MMA welding.
- Digital display for quick setup
- IGBT inverter with RICHIP chip ensures stable arc and low spatter
- Operates at 220V with 120A output, compact 1.5kg design
- Overload, thermal, and IP21 safety protection



Technical Data

Rated Input Voltage	V	AC 220V +- 15%
Rated Frequency	Hz	50 / 60
Output No-Load Voltage	V	60
Rated Input Current	A	20.5A
Welding Current Range	A	30-120
Rated Duty Cycle	%	60%
Efficiency	n	85%
Power Factor	Cosφ	0.63
Insulation Class		F
Protection Class	IP	IP21
Weight	KG	1.5
Dimensions	mm	204 x 87 x 146

INTRUARC 141

MMA Inverter Welding Machine

Item Code: 6-100090

Application:

- MMA
- LIFT-TIG

Package Includes:

- Inverter Power Source
- Earth Clamp + 1.5m Cable
- Electrode Holder + 1.5m Cable

Features:

- Runs on standard 220V power supply
- Delivers up to 140A welding output
- Compact and lightweight design for portability
- Stable arc performance with easy ignition
- Suitable for MMA/Stick welding across various electrode



Technical Data		
Rated Input Voltage	V	AC 220V +- 15%
Rated Frequency	Hz	50 / 60
Rated Input Power Capacity	KVA	4,5
Rated Input Current	A	38A
Welding Current Range	A	20-140A
Output No-Load Voltage	V	67.5V
Rated Duty Cycle	%	60% @ 140A
Welding Electrode Size	mm	2.5/3.2
Weight	KG	5
Dimensions	mm	350 x 150 x 200

INTRUARC 161

MMA Welding Machine

Item Code: 6-1000101

Application:

- MMA
- LIFT-TIG

Package Includes:

- Inverter Power Source
- Earth Clamp + 1.5m Cable
- Electrode Holder + 1.5m Cable

Features:

- Operates on 220V single-phase input
- Strong 160A output for heavier welding tasks
- Built-in thermal overload protection for safety
- Adjustable current control for precision welding
- Rugged casing designed for durability in tough environment



Technical Data		
Rated Input Voltage	V	AC 220V +- 15%
Rated Frequency	Hz	50 / 60
Rated Input Power Capacity	KVA	4.7
Rated Input Current	A	35A
Welding Current Range	A	20-160A
Output No-Load Voltage	V	58V
Rated Duty Cycle	%	60% @160A
Welding Electrode Size	mm	2.0/2.5/3.2
Weight	KG	7
Dimensions	mm	335 x 130 x 230

GENE SP 22

MMA/LIFT TIG Inverter Welding Machine

Item Code: 6-100082

Application:

- MMA
- LIFT TIG

Package Includes:

- Inverter Power Source
- Earth Clamp + 1.5m Cable
- Electrode Holder + 1.5m Cable

Features:

- DIY-grade single-phase IGBT inverter
- Compact modern design for easy handling
- Supports welding on carbon steel and stainless steel
- ARC force (0–100A), hot start, and digital display
- Delivers 200A output on 220V power supply



Technical Data

Technical Data		
Rated Input Voltage	V	AC 220V +-15%
Rated Frequency	Hz	50 / 60
Output No-Load Voltage	V	65
Rated Input Current	A	48
Welding Current Range	A	20-200A
Rated Duty Cycle	%	60% @ 200A
Rated Input Power Capacity	KVA	6,5
Welding Electrode Size	mm	2.5/4.0
Weight	KG	8
Dimensions	mm	360 x 150 x 200

INTRUARC 210HD

MMA Inverter Welding Machine

Item Code: 6-100103

Application:

- MMA
- LIFT TIG

Package Includes:

- Inverter Power Source
- Earth Clamp + 1.5m Cable
- Electrode Holder + 1.5m Cable

Features:

- Runs on 220V single-phase power
- Delivers up to 200A output current
- Digital display for precise settings
- Built-in overload and thermal protection
- Compact, portable design for easy transport



Technical Data

Rated Input Voltage	V	220V+- 15%
Rated Frequency	Hz	50 / 60
Rated Supply Current	A	35.6A
Output Current Range	A	30-200A
Output Voltage Range	V	21.2-28V
Duty Cycle	%	60%
Power Factor		0.73
No Load Voltage	V	61V
Efficiency	%	80%
Electrode Size:	mm	2.0 - 4.0mm
Insulation Class		F
Protection Class	IP	IP21

WATER COOLER 9L

Water Cooler

Item Code: 6-100401

Features:

- Efficient cooling for TIG / MIG Welders
- Copper cooling element
- Stainless steel pump with large cooling fan
- Compact design



Technical Data

Connection Voltage	220V - 50/60Hz
Capacity	9L
Protection	IP21
Max Cooling Capacity	3760W @ 1.7l/min
Dimensions	457 x 254 x 330mm
Weight	17kg

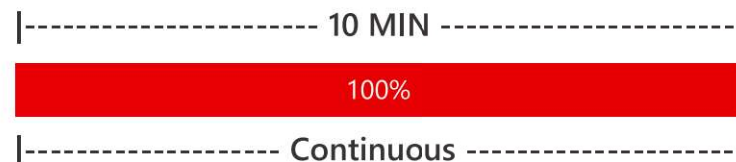
UNDERSTANDING DUTY CYCLE

THE 10-MINUTE RULE



60% DUTY CYCLE

To prevent overheating and component damage, do not exceed 6 minutes of continuous welding at this amperage.



100% DUTY CYCLE

The machine can run continuously at this amperage and does not require a cooling cycle.

PRO-TIP:

A machine's duty cycle decreases as amperage increases. If you push a 180A machine (at 60%) up to 200A, the duty cycle might drop to 40% (4 min weld, 6 min cool).

WELDING ELECTRODES

S PRO E6013 ELECTRODE

S Pro is a premium, high quality rutile-coated electrode engineered for versatile mild steel applications. Designed specifically for maintenance and repair, it excels on challenging surfaces, including wet, dirty, or contaminated metals. It provides superior performance across grained and structural steels, thin-gauge plates, tubing, and piping.

Classification:

AWS A5.1 E6013
EN ISO 2560 B 43 13 A

Welding Positions:



Chemical Composition				
C	Mn	Si	P	S
0.03-0.08	0.40-0.65	0.2-0.5	0.020 MAX	0.01 MAX

Mechanical Properties			
Yield Strength	Tensile Strength	Charpy @ 20° C	Elongation
480Mpa	500Mpa	90 J	28%



Size (mm)	Current (A)	Item Code
2.5mm	60 - 95	1kg 1-100088 5kg 1-100090
3.2mm	80 - 120	1kg 1-100089 5kg 1-100091
4mm	100 - 150	5kg 1-100092

SUPER 7 E6013 ELECTRODE

SUPER 7 E6013 is a premium, rutile-coated electrode engineered for high quality, general-purpose welding in all positions. Featuring minimal spatter and low smoke levels, it offers an exceptional user experience with effortless initial strikes and re-strikes. The slag is highly friable and often self-lifting, leaving behind a clean, aesthetically superior weld bead on both fillet and butt joints.

Classification:

AWS A5.1 E6013

Welding Positions:



Chemical Composition				
C	Mn	Si	P	S
0.05-0.1	0.35-0.60	0.2-0.5	0.025 MAX	0.025 MAX

Mechanical Properties			
Yield Strength	Tensile Strength	Charpy @ 20° C	Elongation
460Mpa	480Mpa	80 J	24%



Size (mm)	Current (A)	Item Code
2.0mm	40 - 70	1kg 1-1001101
2.5mm	60 - 95	0.5kg 1-100115A 1kg 1-100111 5kg 1-100113
3.2mm	80 - 120	0.5kg 1-100115B 1kg 1-100112 5kg 1-100114
4mm	100 - 150	1kg 1-1001121 5kg 1-100115
5mm	140 - 200	5kg 1-1001151

SUPER 5 E6013 ELECTRODE

SUPER 5 E6013 is a user-friendly, all-positional electrode optimized for DIY and light fabrication. Engineered for smooth arc stability with minimal smoke and spatter, it features a self-lifting slag for effortless cleanup. Specifically designed for compatibility with 100A inverter welders, it offers a professional finish for entry-level and home workshop applications.

Classification:

AWS A5.1 E6013

Welding Positions:



Chemical Composition				
C	Mn	Si	P	S
0.08	0.58	0.19	0.013	0.013

Mechanical Properties			
Yield Strength	Tensile Strength	Charpy @ 20° C	Elongation
460Mpa	450Mpa	-	25%



Size (mm)	Current (A)	Item Code
2.5mm	60 - 95	1kg 1-1001160 5kg 1-100116
3.2mm	80 - 120	5kg 1-100117

WELDING ELECTRODES

CHISA SH E6013 MILD STEEL

CHISA SH E6013 is a versatile, all-positional electrode designed for smooth, quiet arc stability and minimal spatter. It produces a medium penetrating arc that is easily maintained, even on machines with low Open Circuit Voltage (OCV). Featuring a self-lifting slag and a fine rippled bead contour, it is the ideal choice for high-quality generalpurpose welding.

Classification:
AWS A5.1 E6013

Welding Positions:



Chemical Composition					
C	Mn	Si	P	S	Fe
0.08	0.45	0.18	0.014	0.012	Rem

Mechanical Properties			
Yield Strength	Tensile Strength	Charpy @ 20° C	Elongation
460Mpa	450Mpa	-	-25%

Size (mm)	Current (A)	Item Code
2.0mm	40 - 70	1kg 1-100119
		4kg 1-100124
2.5mm	60 - 95	1kg 1-100120
		5kg 1-100125
3.2mm	80 - 120	1kg 1-100121
		5kg 1-100126
4mm	100 - 150	5kg 1-100127
		5kg 1-100128

CITOX E7018-1 LOW HYDROGEN

CITOX E7018-1 is a high-deposition, low-hydrogen electrode engineered for low and medium carbon steels. It delivers exceptional mechanical properties, including superior crack resistance and X-ray quality welds for critical structural applications. Designed for maximum efficiency, it offers a quiet, stable, and virtually spatter-free arc with a smooth, professional finish. A 70V OCV is required for optimum arc stability and performance.

Classification:
AWS A5.1 & ASME SFA 5.1 E7018-1

Chemical Composition					
C	Mn	Si	P	S	Fe
0.08	1.00	0.60	0.021	0.011	Rem

Mechanical Properties			
Yield Strength	Tensile Strength	Charpy @ 20° C	Elongation
480Mpa	560Mpa	-	-29.4%



Size (mm)	Current (A)	Item Code
2.5mm	60 - 95	5kg 1-100201
3.2mm	80 - 120	5kg 1-100202
4mm	100 - 150	5kg 1-100203
5mm	140 - 200	5kg 1-100204

FERROX E7024 IRON POWDER

FERROX is a heavily coated, rutile iron powder electrode engineered for high speed welding of flat butt joints and horizontal-vertical (H-V) fillets. With a high metal recovery rate of approximately 160%, it significantly increases productivity by depositing more weld metal per electrode. Designed for efficiency, it delivers a smooth, consistent finish at accelerated travel speeds.

Application:
Ship Building, Boilers, Heavy Duty Equipment.

Classification:
AWS A5.1 & ASME SFA 5.1 E7024

Chemical Composition				
C	Mn	Si	P	S
0.03-0.08	0.40-0.65	0.2-0.5	0.020 MAX	0.01 MAX

Mechanical Properties			
Yield Strength	Tensile Strength	Charpy @ 20° C	Elongation
480Mpa	560Mpa	-	-27%



Size (mm)	Current (A)	Item Code
3.2mm	120 - 150	5kg 1-100301
4mm	160 - 225	5kg 1-100302
5mm	220 - 330	5kg 1-100303

WELDING ELECTRODES

SUPER POWER GOUGE

SUPER POWER GOUGE is a specially formulated stick electrode engineered for rapid and efficient metal removal. Designed for maximum performance, it allows for high-speed gouging, piercing, and chamfering without the need for compressed air or oxygen. This versatile tool is the ideal solution for preparing weld joints or removing defective welds with minimal setup.

Application:

- Create U-groove for weld joints
- Remove old welds
- Gouge out cracks
- Cleaning and repairing castings
- Remove hard surface material
- Rough machining
- Pierce hole.



Size (mm)	Current (A)	Item Code
3.2mm	170 - 300	3kg 1-100410
4mm	225 - 400	3kg 1-100411

ALUARC E4043 ALSi 5

ALUMINIL Si5 is a specialized, coated electrode engineered for the welding, repair, and surfacing of forged or cast aluminum-silicon (Al-Si) alloys. Its superior fluidity makes it ideal for joining dissimilar aluminum alloys with a maximum 7% Silicon content and for general aluminum casting repairs (excluding AlMg alloys). Featuring a distinctive moisture-resistant white coating, it is specifically formulated to minimize hydrogen porosity and ensure a clean, stable arc.

Classification:

- AWS A5.3: E 4043
- EN ISO 18273: E Al 4043 (AlSi5)



Size (mm)	Current (A)	Item Code
2.5mm	50 - 80	2kg 1-100520
3.2mm	70 - 120	2kg 1-100521
4mm	110 - 150	2kg 1-100522

Chemical Composition					
Mn	Si	Cu	Zn	Fe	Al
0.05	5	0.05	0.10	0.20	Bal.

Mechanical Properties			
Yield Strength	Tensile Strength	Charpy @ 20° C	Elongation
90Mpa	160Mpa	-	15%

SUPERCLAD 33 HARDFACING

SUPERCLAD 33 is a rutile-coated, AC/DC electrode engineered for hardfacing applications requiring a balance of toughness and wear resistance. It deposits a robust Chromium-Manganese (Cr-Mn) alloy weld with a hardness of 50–55 HRC. Designed for durability, it is the ideal choice for protecting components against moderate abrasion and impact.

Application:

- Tractor, Idlers, track rollers, dragline pins & gears.

Classification:

- DIN 8555 EI-UM-400P



Size (mm)	Current (A)	Item Code
3.2mm	100 - 140	2kg 1-1004331
4mm	120 - 160	2kg 1-1004332

Chemical Composition				
C	Mn	Si	Cr	Mo
0.2	1.2	0.8	5.0	0.2 MAX

WELDING ELECTRODES

SUPERCLAD 33S HARDFACING

SUPERCLAD 33S is a rutile-coated, AC/DC electrode engineered for demanding hardfacing applications. It deposits a rugged eutectic structure of austenite and metal carbides, specifically designed to withstand abrasive wear and medium-impact loads. Achieving a hardness of 55–60 HRC, it provides a durable, wear-resistant surface for industrial components.

Application:

Sugar mill roll, excavator bucket lips, dragline bucket.

Classification:

DIN 8555 E10-UM-55-GPR



Chemical Composition			
C	Mn	Si	Cr
3.5	2.0	1.0	27

Size (mm)	Current (A)	Item Code
3.2mm	100 - 140	2kg 1-1004335
4mm	120 - 160	2kg 1-1004336

SUPERCAST 55 CAST IRON

NI-CAST NiFe is a versatile, AC/DC nickel-iron alloy electrode engineered for the production, salvage, and repair of all grades of cast iron. This general purpose electrode provides superior strength and ductility, making it the ideal choice for joining cast iron to steel or repairing heavy-section castings. It offers excellent weld-ability with a stable arc and a crack-resistant deposit.

Application:

Suited for joining, filling and build-up of grey and alloyed cast irons, can be used for pump housings, valves, castings, deposits are machinable and have high strength.

Classification:

AWS A5.15 ENiFe-CI

Chemical Composition				
C	Mn	Si	Ni	Cu
2.0	2.5	4.0	55	2.5



Size (mm)	Current (A)	Item Code
2.5mm	50 - 80	1kg 1-100501
3.2mm	80 - 120	1kg 1-100502
4mm	110 - 140	1kg 1-100503

SUPERCAST 99 CAST IRON

NI-CAST Pure Ni is a premium, high-nickel electrode designed for the professional production and repair of cast iron components. Engineered for maximum machinability, it provides a soft, ductile weld deposit that effectively handles the stresses of cast iron cooling. This general purpose electrode is ideal for filling holes, repairing cracks, and joining thin sections where a high-quality, easily finished surface is required.

Application:

Suited for build-up, jointing, filling holes, breaks and cracks in all types of cast irons. It has very good out-of-position welding characteristics.

Classification:

AWS A5.15 ENi-CI

Chemical Composition				
C	Mn	Si	Ni	Cu
2.0	1.0	4.0	90	2.5



Size (mm)	Current (A)	Item Code
2.5mm	50 - 80	1kg 1-100504
3.2mm	80 - 120	1kg 1-100505
4mm	110 - 140	1kg 1-100506

WELDING ELECTRODES

STAINARC 316L STAINLESS STEEL

STAINARC 316L is a premium rutile-coated electrode engineered for welding 316 and 316L grade stainless steels. It offers superior corrosion and heat resistance, making it the professional choice for pharmaceutical, oil refining, and high-temperature industrial equipment. Designed for operational excellence, it delivers a stable arc and a smooth, high-quality finish in demanding environments.

Chemical Composition							
C	Mn	Si	Cr	Ni	Mo	S	P
0.04	1.0	0.7	19	12	2.5	0.02	0.03

Mechanical Properties			
Yield Strength	Tensile Strength	Charpy @ 20° C	Elongation
440Mpa	650Mpa	-	35%

Size (mm)	Current (A)	Item Code
2.5mm	50 - 90	2kg 1-100601
3.2mm	70 - 130	2kg 1-100602
4mm	100 - 170	2kg 1-100603

Classification:

AWS A5.4 E316L-16



STAINARC 308L STAINLESS STEEL

STAINARC 308L is a premium rutile-coated electrode with a low-carbon 19% Cr / 9% Ni composition. It is specifically engineered for welding 304, 304L, 301, and 302 grade stainless steels. Designed for superior corrosion resistance and arc stability, it delivers a smooth, high-quality weld bead with excellent moisture resistance and minimal carbon precipitation.

Chemical Composition							
C	Mn	Si	Cr	Ni	Mo	S	P
0.03	1.0	0.7	19	9.5	-	0.01	0.03

Mechanical Properties			
Yield Strength	Tensile Strength	Charpy @ 20° C	Elongation
380Mpa	570Mpa	-	40%

Size (mm)	Current (A)	Item Code
2.5mm	50 - 90	2kg 1-100604
3.2mm	80 - 130	2kg 1-100605
4mm	100 - 170	2kg 1-100606

Application:

Used on brewing equipment, vacuum pump spares, dairy equipment, chemical handling equipment and food processing.

Classification:

AWS A5.4 E308L-16



WELDING ELECTRODES

STAINARC 309L STAINLESS STEEL

STAINARC 309L is a low-carbon, rutile-coated electrode (23% Cr / 12% Ni) designed for Grade 309 corrosion and heat-resistant steels. It is the industry standard for joining dissimilar metals, such as stainless steel to mild steel, providing excellent crack resistance and a smooth, high-quality finish.

Application:

Used on furnace parts, aircraft components, heat exchanger and chemical processing equipment. Can be used for welding dissimilar carbon steel to low alloy steel, welding stainless steel to mild steel and a buffer for hard-facing applications.

Classification:

AWS A5.4 E309L-16

Chemical Composition							
C	Mn	Si	Cr	Ni	Mo	S	P
0.03	1.0	0.75	23.6	12.5	-	0.01	0.03

Mechanical Properties			
Yield Strength	Tensile Strength	Charpy @ 20° C	Elongation
450Mpa	650Mpa	-	30%

Size (mm)	Current (A)	Item Code
2.5mm	50 - 85	2kg 1-100607
3.2mm	80 - 120	2kg 1-100608
4mm	100 - 150	2kg 1-100609



STAINARC 312 STAINLESS STEEL

STAINARC 312 is a low-carbon, rutile-coated electrode with a high-alloy 29% Cr / 9% Ni composition. This "universal" electrode is engineered for welding steels of low weldability and materials of unknown composition. It is the ideal solution for joining dissimilar metals, such as carbon steel to stainless steel, offering maximum crack resistance. Features a light blue coating for quick and unique identification.

Application:

Weld on dissimilar steels, tool steel, dies and springs.

Classification:

AWS A5.4 E312-16

Chemical Composition							
C	Mn	Si	Cr	Ni	Mo	S	P
0.10	1.5	0.8	29	9	0.15	0.02	0.02

Mechanical Properties			
Yield Strength	Tensile Strength	Charpy @ 20° C	Elongation
620Mpa	700Mpa	-	24%

Size (mm)	Current (A)	Item Code
2.5mm	45 - 80	2kg 1-100613
3.2mm	75 - 110	2kg 1-100614
4mm	110 - 150	2kg 1-100615



WELDING ELECTRODES

STAINARC 310 STAINLESS STEEL

A high-performance, rutile-coated electrode (25% Cr, 21% Ni) designed for all-positional welding of Grade 310 stainless steel. Offering superior thermal stability and corrosion resistance, it is the professional standard for high-temperature stainless steel fabrication and maintenance.

Application:

Used on welding of resists scaling in oxidising atmospheres up to 1,100C while maintaining joint strength.

Classification:

AWS A5.4 E310-16



Chemical Composition							
C	Mn	Si	Cr	Ni	Mo	S	P
0.1	2.0	0.7	25	21	0.2	0.02	0.02

Mechanical Properties			
Yield Strength	Tensile Strength	Charpy @ 20° C	Elongation
400Mpa	650Mpa	-	30%

Size (mm)	Current (A)	Item Code
2.5mm	50 - 70	2kg 1-100620
3.2mm	80 - 95	2kg 1-100621
4mm	95 - 130	2kg 1-100622

STAINARC 2209 STAINLESS STEEL

STAINARC 2209 is a premium rutile-coated electrode for welding austenitic-ferritic duplex steels. It produces high strength welds with 25%–30% ferrite content for optimal corrosion resistance. This user-friendly electrode features effortless re-striking and a superior bead profile, ensuring smooth operation in demanding environments.

Application:

Suit for welding SAF 2205 and LDX 2101

Classification:

AWS A5.4 E2209-16



Chemical Composition							
C	Mn	Si	Cr	Ni	Mo	S	P
0.03	1.0	0.75	23.6	12.5	-	0.01	0.03

Mechanical Properties			
Yield Strength	Tensile Strength	Charpy @ 20° C	Elongation
450Mpa	650Mpa	-	30%

Size (mm)	Current (A)	Item Code
2.5mm	50 - 80	2kg 1-100625
3.2mm	70 - 120	2kg 1-100626

ARC Welding Accessories



Pinnacle
PORTABLE MIG/MAG ROD (E6013)
10.1 KW AC 250V
TEMPERATURE: -40°C ~ 500°C
POWER: 11.60
CABLE TYPE: 1000/41MM

Pinnacle
magnum 3

Pinnacle
Super 7
E6013
WELDING ELECTRODES

ARC WELDING ACCESSORIES

FLIP FRONT HELMET

- Durable & Affordable
- For use of all types of Welding & Grinding
- Replacement lenses:
 - Shade 8, 10, 11, 12, Clear Glass & Clear Plastic

Item Code
8-100118



AUTO DARKENING SPECTACLE

Technical Data	
Filter Size	108mm x 51mm x 5.5mm
View Area	90mm x 32mm
Light Shade	DIN3
Dark Shade	DIN11
Switching Time	1/1000s
Recovery Time	0.2s
Power Supply	Solar Cells + Lithium Cells
Working Temperature	-20° C to 60° C

Item Code
8-100100



ARCO WELDING HELMET

Technical Data	
View Area	92mm x 42mm
ARC Sensor	2
Light State	DIN 4
Dark State	Shade 9-13
Power Supply	Solar Cells
Switching Time	1/25000s
Dark to Light	0.1s - 1.0s
Low Amps TIG Rate	10 Amps (DC) or less
Grinding Function	Yes
Shade Control	Adjustable
Power On/Off	Automatic
UV/IR Protection	Up to DIN 16
Sensitivity Control	Low-High, by dial knob
Weight	490g

Item Code
8-100100A

- Solar-powered for long lasting life, up to 5,000 hours.
- Ideal for ARC, MIG, TIG Welding and Plasma Cutting.
- Variable, Shade 9-13, Variable Sensitivity and Delay Control.
- Lens darkening reaction 1/25,000sec.
- Superior design.
- Includes inner replacement lens cover.



ARC WELDING ACCESSORIES

MAGNUM S WELDING HELMET

Technical Data	
View Area	90mm x 35mm
ARC Sensor	2
Light State	DIN 4
Dark State	Shade 10 (11)
Power Supply	Solar Cells
Switching Time	1/50000s
Dark to Light	0.25s - 0.45s
Low Amps TIG Rate	≥ 35 Amps (DC)
Grinding Function	No
Shade Control	Non-Adjustable
Power On/Off	Automatic
UV/IR Protection	Up to DIN 16
Sensitivity Control	Non-Adjustable, Auto
Weight	460g

Item Code
8-100101

- Solar-powered for long lasting life, up to 2,000 hours.
- Light weight, fully adjustable headgear.
- Features auto-off circuitry at 15-20min.
- Two Independent ARC sensors.
- Ideal for ARC, MIG, TIG Welding.
- Includes replacement lens cover.



DECASOLA WELDING HELMET

Technical Data	
View Area	90mm x 35mm
ARC Sensor	2
Light State	DIN 4
Dark State	Shade 10 (11)
Power Supply	Solar Cells
Switching Time	1/50000s
Dark to Light	0.25s - 0.45s
Low Amps TIG Rate	≥ 35 Amps (DC)
Grinding Function	No
Shade Control	Non-Adjustable
Power On/Off	Automatic
UV/IR Protection	Up to DIN 16
Sensitivity Control	Non-Adjustable, Auto
Weight	470g

Item Code
8-100102

- Solar-powered for long lasting life, up to 2,000 hours.
- Light weight, fully adjustable headgear.
- Features auto-off circuitry at 15-20min.
- Two Independent ARC sensors.
- Ideal for ARC, MIG, TIG Welding.
- Includes replacement lens cover.



OTOSOLA WELDING HELMET

Technical Data	
View Area	92mm x 42mm
ARC Sensor	2
Light State	DIN 4
Dark State	Shade 9-13
Power Supply	Solar Cells
Switching Time	1/25000s
Dark to Light	0.1s - 1.0s
Low Amps TIG Rate	≥ 10 Amps (DC)
Grinding Function	Yes
Shade Control	Adjustable
Power On/Off	Automatic
UV/IR Protection	Up to DIN 16
Sensitivity Control	Low-High, by dial knob
Weight	480g

Item Code
8-100103

- Solar-powered for long lasting life, up to 5,000 hours.
- Ideal for ARC, MIG, TIG Welding and Plasma Cutting.
- Features Auto-off circuitry A 15-20min.
- Lens darkening reaction 1/25,000sec.
- Two independent arc sensors.
- Includes inner replacement lens cover.
- With grinding function.



ARC WELDING ACCESSORIES

BATMAN WELDING HELMET

Technical Data	
View Area	92mm x 45mm
ARC Sensor	2
Light State	DIN 4
Dark State	Shade 9-13
Power Supply	Solar Cells
Switching Time	1/25000s
Dark to Light	0.1s - 1.0s
Low Amps TIG Rate	≥ 10 Amps (DC)
Grinding Function	Yes
Shade Control	Adjustable
Power On/Off	Automatic
UV/IR Protection	Up to DIN 16
Sensitivity Control	Low-High, by dial knob
Weight	490g

Item Code
8-100104

- Solar-powered for long lasting life, up to 5,000 hours.
- Variable, Shade 9-13, Variable Sensitivity and Delay Control.
- Ideal for ARC, MIG, TIG Welding and Plasma Cutting.
- Lens darkening reaction 1/25,000sec.
- Superior design.
- Includes inner replacement lens cover.
- With grinding function.



GARAGE WELDING HELMET

Technical Data	
View Area	92mm x 42mm
ARC Sensor	2
Light State	DIN 4
Dark State	Shade 9-13
Power Supply	Solar Cells, no battery req
Switching Time	1/25000s
Dark to Light	0.1s - 1.0s
Low Amps TIG Rate	≥ 10 Amps (DC)
Grinding Function	Yes
Shade Control	Adjustable
Power On/Off	Automatic
UV/IR Protection	Up to DIN 16
Sensitivity Control	Low-High, by dial knob
Weight	480g

Item Code
8-100103-1

- Solar-powered for long lasting life, up to 5,000 hours.
- Variable, Shade 9-13, Variable Sensitivity and Delay Control.
- Ideal for ARC, MIG, TIG Welding and Plasma Cutting.
- Lens darkening reaction 1/25,000sec.
- Superior design.
- Includes inner replacement lens cover.



WELDING SKULL CAP

The Pinnacle welding skull cap is manufactured from 100% cotton, the cap is worn underneath the welding helmet, hard hat, and/or brow cover. This serves to protect users exposed neck area and also provides a more sanitary use of welding helmets.

Item Code
13-100168



WELDING HOOD

The Pinnacle welding hood is made from flame retardant fabric.

Item Code
13-1001681



ARC WELDING ACCESSORIES

D59 WELDING SKULL CAP

The D59 Welding Skull Cap is a lightweight, flame-retardant head protector designed for comfort under welding helmets. Crafted from durable D59 cotton, it shields the scalp and hair from sparks and spatter while absorbing sweat during long shifts.

Item Code
13-1001682



D59 WELDING HOOD

The D59 Welding Hood provides essential flame-retardant coverage for the head and neck. Crafted from durable D59 cotton, it shields against heat, sparks, and spatter in demanding industrial environments.

Item Code
13-1001683



WELDING HELMET FOR HARD HAT

This welding helmet is made to fit most hard hats.

Item Code
13-100415



LENS 108 x 51 MM

Replacement lenses: Shade 8, 10, 11, 12, Clear Glass, Clear Plastic (1000h)

Item Code	
Shade 8	8-100120
Shade 10	8-100121
Shade 11	8-100122
Shade 12	8-100123
Clear Glass	8-100124
Clear Plastic	8-100124-1



AUTO DARKENING FILTER LENS 300F

Use with Pinnacle Magnum S & Decasola welding helmets.

Item Code
8-100110



AUTO DARKENING FILTER LENS 550E

Use with Pinnacle Otosola S & Batman welding helmets.

Item Code
8-100111



ARC WELDING ACCESSORIES

INNER PROTECTIVE LENS

Inner protective lens for Otosola, Magnum S and Decasola helmets.

Item Code	
Otosola	8-100108
Magnum S & Decasola	8-100109



OUT PROTECTIVE LENS

Outer protective lens for Decasola helmets.

Item Code
8-100106



OUT PROTECTIVE LENS

Outer protective lens for Magnum S helmets.

Item Code
8-100105



OUT PROTECTIVE LENS

Outer protective lens for Otosola helmets.

Item Code
8-1001070



OUT PROTECTIVE LENS

Outer protective lens for Batman helmets.

Item Code
8-1001071



HIGH LEVEL HEAD GEAR

Item Code
8-100114



HEAD GEAR

Use with Decasola helmet.

Item Code
8-100115



HEAD GEAR

Use with Otosola helmet.

Item Code
8-100116



ARC WELDING ACCESSORIES

ELECTRODE HOLDER OPTIMUS

For heavy duty welding.

Item Code	
400A	8-100130
600A	8-100131



ELECTRODE HOLDER JAW - SAM TYPE

For medium to heavy duty welding.

Item Code	
300A	8-100135
500A	8-100136



ELECTRODE HOLDER KD TYPE

For DIY and light duty welding.

Item Code	
300A	8-100140
500A	8-100141



ELECTRODE HOLDER TWIST LOCK

For extra heavy duty welding.

Item Code	
400A	8-100145
600A	8-100146



CROC TYPE EARTH CLAMP

Croc Type Clamp

Item Code	
200A	8-100150
400A	8-100151



CROC TYPE EARTH CLAMP

600Amp Croc Type Clamp

Item Code
8-100152



G-TYPE EARTH CLAMP

800Amp Extra heavy duty G-Type Clamp

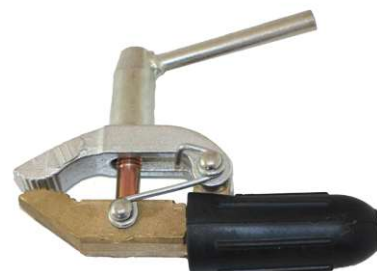
Item Code
8-100153-1



G-TYPE EARTH CLAMP

600Amp Heavy duty G-Type Clamp

Item Code
8-100153



ARC WELDING ACCESSORIES

MAGNETIC EARTH CLAMP

+ - 400A Magnetic Clamp

Item Code
8-100168



CHIPPING HAMMER

Item Code
8-100160



WIRE BRUSH

Mild Steel, 5 Rows

Item Code
8-100161



WIRE BRUSH

Stainless Steel, 5 Rows

Item Code
8-100162



WELDING MAGNETS

25lb (11.4kg) | 50lb (22.7kg) | 75lb (34kg)

Item Code
25lb - 8-100165
50lb - 8-100166
75lb - 8-100167



DINSE TYPE CABLE CONNECTOR

Male Connector

Item Code	
10-25mm	8-100170
35-50mm	8-100171
50-70mm	8-100172
95mm	8-100173



DINSE TYPE CABLE CONNECTOR

Female Connector

Item Code	
10-25mm	8-100175
35-50mm	8-100176
50-70mm	8-100177
95mm	8-100178



MACHINE PANEL SOCKET

Male Sockets

Item Code	
10-25mm	8-100180
35-50mm	8-100181
50-70mm	8-100182



ARC WELDING ACCESSORIES

MACHINE PANEL SOCKET

Female Sockets

Item Code	
10-25mm	8-100185
35-50mm	8-100186
50-70mm	8-100187



MACHINE PANEL SOCKET

Female Lug Type Sockets

Item Code	
10-25mm	8-100187A
35-50mm	8-100187B
50-70mm	8-100187C



PVC WELDING CABLE 50m

Pinnacle welding cables are 100% copper, PVC double insulated. Selection guide according to duty cycle (A).



Size	Colour	Item Code	100%	85%	60%	30%	20%
16mm	Green	8-100190	110	120	145	200	250
25mm	Blue	8-100191	150	165	195	275	340
35mm	Grey	8-100192	185	200	240	340	415
50mm	Red	8-100193	230	250	300	420	520
70mm	Brown	8-100194	290	300	380	530	650
95mm	Yellow	8-100195	355	385	465	650	800

WELDING CABLE SET 160A

16mm (2m Electrode Holder & Cable + 2m Earth Clamp and Cable)
Uses 10-25mm Dinse Cable Connectors

Item Code
8-100198



WELDING CABLE SET 250A

25mm (2m Electrode Holder & Cable + 2m Earth Clamp and Cable)
Uses 35-50mm Dinse Cable Connectors

Item Code
8-100199



K4 GOUGING TORCH

- Heavy Duty with swivel hard
- 1000A

Item Code
8-100300



K5 GOUGING TORCH

- Heavy Duty with swivel hard
- 1200A

Item Code
8-100301



ARC WELDING ACCESSORIES

6 PIECE WELDING KIT 160A

Consists of welding cable set, chrome leather gloves, flip front helmet, chipping hammer and brush.

Item Code
8-100401



6 PIECE WELDING KIT 250A

Consists of welding cable set, chrome leather gloves, flip front helmet, chipping hammer and brush.

Item Code
8-100402



CABLE LUGS

Item Code	
16 x 10mm	8-100200
25 x 10mm	8-100201
35 x 12mm	8-100202
50 x 12mm	8-100203
70 x 12mm	8-100204



WELDING CURTAIN

Yellow PVC with Eye lids.

Item Code	
2m x 2m	8-100210
3m x 2m	8-100211
3m x 3m	8-100212



GLASS FIBRE FIRE BLANKET

Glass Fibre Fire Blanket (White) Sasol Spec 550° C.

Item Code	
2m x 2m	8-100217
3m x 2m	8-100218
3m x 3m	8-1002181
1m x 50m Roll	8-100225



BLUE ARC ANTI-SPATTER

Blue ARC anti-spatter, water based and non-silicon.

Item Code	
5L	9-100091
20L	9-1000911



ANTI-SPATTER

Aerosol Spray can.

Item Code	
300ml Silicon Free	9-100101
400ml Silicon	9-100102



ENGINEERING AEROSOL

Item Code	
Marking Blue 400ml	9-100106
Cleaner 300ml	9-100105
Developer 400ml	9-100104
Penetrant 400ml	9-100103



ARC WELDING ACCESSORIES

WELDING LIQUIDS

1 Liter. Stainless Pickling Paste, Stainless Passivating Gel, Aluminum Cleaner, Rust Remover.

Item Code	
Pickling Paste	9-100070
Passivator Gel	9-100071
Aluminum Cleaner	9-100073
Rust Remover	9-100072



TRANSFORMER OIL

Item Code	
1L	9-100120
5L	9-100121



SOAP STONE

Boiler Markers Chalk - 144 p/box

Item Code	
9-100110	



INDUSTRIAL MARKERS

Permanent markers - White / Yellow / Red.

Item Code	
White	9-100111
Yellow	9-100112
Red	9-100113



PAINT MARKERS

Paint markers pens - White / Yellow / Red.

Item Code	
White	9-100115
Yellow	9-100116
Red	9-100117



TAMPER CHECK

For checking loose nuts & bolts.

Item Code	
9-100122	



DRYTEC HOTBOX

- 5kg Capacity @ max 200° C
- 12kg Capacity @ max 300° C

Item Code	
5kg	7-100105
12kg	7-100106



MIG Welding Wire



MIG WELDING WIRE

XTRAWELD 2

Xtraweld 2 is a premium grade mild steel MIG/MAG welding wire, produced from high quality deoxidized mig rod, this product is copper coated to increase shelf life and feeding ability. Precision layer wound, used with shielding gas such as CO2 at 15-20L/min, argon CO2 mixture at 10-15L/min.

Approvals:

LR H15, ABS 2SA, DNV, BV.

Classification:

AWS A5.18 ER70S-6

EN ISO 14341 G3Si1

Chemical Composition						
C	Mn	Si	S	P	Cu	Fe
0.10	1.60	1.05	0.025	0.03	0.18	Bal

Mechanical Properties use with CO2 gas				
Tensile Strength	Yield Strength	Elongation	Charpy V-Notch @ 20°C	Charpy V-Notch @ -20°C
510-570MPa	450MPa	28%	150J	60J



Size (mm)	Net Weight / Spool	Item Code
0.6mm	5kg	2-100101
0.8mm	5kg	2-100102
0.9mm	1kg	2-100111
0.8mm	15kg	2-100201
0.9mm	15kg	2-100202
1.0mm	15kg	2-100203
1.2mm	15kg	2-100204
1.6mm	15kg	2-100205

XTRAWELD 2 - DRUM PACK

Xtraweld 2 drum pack is a MIG/MAG wire system designed to enhance the performance of automated welding system, using unique reverse twist coiling method, to ensure the wire from drum virtually straight and twist free. Every drum pack used will save approximately 3 hours downtime.

Approvals:

LR H15, ABS 2SA, DNV, BV.

Classification:

AWS A5.18 ER70S-6

EN ISO 14341 G3Si1



Item Code
2-100408

*optional drum cone set for drum pack.

Chemical Composition						
C	Mn	Si	S	P	Cu	Fe
0.10	1.60	1.05	0.025	0.03	0.18	Bal

Mechanical Properties use with CO2 gas				
Tensile Strength	Yield Strength	Elongation	Charpy V-Notch @ 20°C	Charpy V-Notch @ -20°C
510-570MPa	450MPa	28%	150J	60J



Size (mm)	Net Weight / Spool	Item Code
1.0mm	250kg	2-100401
1.2mm	250kg	2-100402
1.6mm	250kg	2-100403

XTRAWELD 648

A low alloy steel welding wire containing Ni, Mo and V. The wire is copper coated, used for welding high tensile strength up to 930Mpa. Gas flow rate 14-16L/min

Classification:

AWS A5.28 ER100S-G

Chemical Composition								
C	Mn	Si	Cr	Ni	Cu	Mo	V	
0.08	1.70	0.6	0.4	1.5	0.3	0.3	0.1	

Mechanical Properties		
Tensile Strength	Yield Strength	Elongation
750MPa	800MPa	22%



Size (mm)	Net Weight / Spool	Item Code
1.0mm	15kg	2-100410
1.2mm	15kg	2-100411
1.6mm	15kg	2-100412
1.2mm	250kg	2-100413

MIG WELDING WIRE

Ni99 CAST IRON

Ni99 CAST IRON MIG WIRE is to give a low carbon nickel deposit, used for joining pure nickel to itself, for buffer layers, also excellent for metal spraying.

Application:

Tank & Vessels, process pipework and heat exchanger.

Classification:

AWS A5.15 ENi-CI

Chemical Composition				
C	Mn	Si	Ni	Ti
0.15	1.0	0.70	93 min	2.0-3.5

Mechanical Properties		
Tensile Strength	Yield Strength	Elongation
585MPa	355MPa	35%



Size (mm)	Net Weight / Spool	Item Code
1.2mm	12.5kg	2-100815

STAINLUX 316LSi

ER316LSi Mig wire is used for Mo bearing austenitic stainless steel with 1.5-3% Mo. 316/316L type stainless steel are for good resistance of pitting, acid and general corrosion.

Classification:

AWS A5.9 ER316LSi

Chemical Composition								
C	Mn	Si	Cr	Ni	S	Mo	P	
0.01	1.4	0.8	19	13	0.01	2.5	0.01	

Mechanical Properties		
Tensile Strength	Yield Strength	Elongation
570MPa	440MPa	40%



Size (mm)	Net Weight / Spool	Item Code
0.8mm	5kg	2-100505
0.9mm	5kg	2-100506
0.8mm	15kg	2-100510
0.9mm	15kg	2-100511
1.0mm	15kg	2-100512
1.2mm	15kg	2-100513

STAINLUX 308LSi

ER308LSi Mig wire is used for welding 301, 302, 303, 304 grades stainless steel. Mainly used in brewery, food, architectural and general fabrication.

Classification:

AWS A5.9 ER308LSi

Chemical Composition								
C	Mn	Si	Cr	Ni	S	Mo	P	
0.01	1.7	0.8	20	10	0.01	0.1	0.01	

Mechanical Properties		
Tensile Strength	Yield Strength	Elongation
570MPa	435MPa	40%



Size (mm)	Net Weight / Spool	Item Code
0.8mm	15kg	2-100514
0.9mm	15kg	2-100515
1.0mm	15kg	2-100516
1.2mm	15kg	2-100517

MIG WELDING WIRE

STAINLUX 309LSi

ER309LSi Mig wire is used for welding in high dilution conditions, dissimilar weld, buffer layers.

Classification:

AWS A5.9 ER309LSi

Chemical Composition							
C	Mn	Si	Cr	Ni	S	Mo	P
0.015	1.7	0.8	24	13	0.05	0.1	0.01

Mechanical Properties		
Tensile Strength	Yield Strength	Elongation
560MPa	430MPa	40%

Size (mm)	Net Weight / Spool	Item Code
0.8mm	15kg	2-100518
0.9mm	15kg	2-100519
1.0mm	15kg	2-100520
1.2mm	15kg	2-100521



STAINLUX 307Si

ER307Si is suitable for joining of armour plate, ferritic Cr stainless steel and dissimilar steels. Also suitable for buffer layering prior to hard facing.

Classification:

AWS A5.9 ER307Si

Chemical Composition							
C	Mn	Si	Cr	Ni	S	P	
0.15	7	1.2	19	9	0.025	0.03	

Mechanical Properties		
Tensile Strength	Yield Strength	Elongation
700MPa	400MPa	30%

Size (mm)	Net Weight / Spool	Item Code
1.0mm	15kg	2-100525
1.2mm	15kg	2-100526



STAINLUX 310

ER310 are used for welding 25%Cr,20%Ni (310) type of alloys. The high alloy content gives resistance up to 1200 °C for heat shields, furnace and ducting parts.

Classification:

AWS A5.9 ER310

Chemical Composition							
C	Mn	Si	Cr	Ni	S	Mo	P
0.11	1.8	0.4	26	21	0.005	0.1	0.02

Mechanical Properties		
Tensile Strength	Yield Strength	Elongation
550MPa	360MPa	27%

Size (mm)	Net Weight / Spool	Item Code
1.2mm	15kg	2-100545



MIG WELDING WIRE

STAINLUX 312

ER312 is used for welding known and unknown channel specifications, dissimilar materials. Weld deposit work hardens and give good wear resistance.

Classification:
AWS A5.9 ER312

Chemical Composition							
C	Mn	Si	Cr	Ni	S	Mo	P
0.01	1.8	0.4	29	9.1	0.005	0.1	0.02

Mechanical Properties		
Tensile Strength	Yield Strength	Elongation
820MPa	630MPa	26%



Size (mm)	Net Weight / Spool	Item Code
1.2mm	15kg	2-100530

STAINLUX 410

ER410 is used for welding 13%Cr stainless steel such as 403 and 410 types. Heat treatable, used for machines parts and pump shafts.

Classification:
AWS A5.9 ER410

Chemical Composition							
C	Mn	Si	Cr	Ni	S	Mo	P
0.12	0.48	0.34	13	0.43	0.006	0.48	0.008

Mechanical Properties		
Tensile Strength	Yield Strength	Elongation
520MPa	300MPa	33%



Size (mm)	Net Weight / Spool	Item Code
1.2mm	15kg	2-100535

STAINLUX ER2209

STAINLUX ER2209 Mig wire is used to weld duplex stainless steel pipe, plate, fittings, having 50:50 austenite with ferrite matrix.

Application:
Offshore oil/gas, chemical process, pipework.

Classification:
Conforms to AWS A5.9 ER2209

Chemical Composition					
C	Mn	Si	Cr	Ni	Mo
0.015	1.6	0.5	23	8.2	3.2

Mechanical Properties		
Tensile Strength	Yield Strength	Elongation
800/835MPa	560/620MPa	28/35%



Size (mm)	Net Weight / Spool	Item Code
1.2mm	15kg	2-100539

MIG WELDING WIRE

ALUWELD 4043

ALUWELD 4043 is a 95% aluminium, 5% silicon welding wire suitable for welding heat treatable base alloys of the 6XXX series. Has lower melting point. Also suitable for spray arc and pulsed arc transfer. Application in the construction and automotive industry.

Classification:

AWS A5.10 ER4043

Size (mm)	Net Weight / Spool	Item Code
0.9mm	0.5kg	2-100620
0.9mm	2kg	2-100621
1.0mm	2kg	2-100622
1.2mm	2kg	2-100623
1.0mm	7kg	2-100603
1.2mm	7kg	2-100604
1.6mm	7kg	2-100605



Chemical Composition			
Si	Mg	Mn	Al
5%	0.05	0.05	Bal

Mechanical Properties		
Tensile Strength	Yield Strength	Elongation
180MPa	120MPa	8%

ALUWELD 5356

ALUWELD 5356 is a 95% aluminium, 5% magnesium welding wire suitable for general purpose welding of the 5XXX series alloys. Also suitable for spray arc and pulsed arc transfer. Application in shipping, bulk container, railway, and automotive industry.

Classification:

AWS A5.10 ER5356

Chemical Composition				
Si	Mg	Mn	Al	Fe
0.20	5	0.15	Bal	0.35

Mechanical Properties		
Tensile Strength	Yield Strength	Elongation
280MPa	130MPa	18%



Size (mm)	Net Weight / Spool	Item Code
1.0mm	7kg	2-100610
1.2mm	7kg	2-100611
1.6mm	7kg	2-100612

ALUWELD 1100

ALUWELD is a high quality pure aluminium wire with 99.50% aluminium. Suitable for spray arc and pulsed arc transfer. Application in electronic, electrical, construction, equipment for food, chemical, brewing industry.

Classification:

AWS A5.10 ER1100

Chemical Composition				
Si	Mg	Mn	Al	Fe
0.20	0.02	0.02	Bal	0.20

Mechanical Properties		
Tensile Strength	Yield Strength	Elongation
65MPa	20MPa	35%



Size (mm)	Net Weight / Spool	Item Code
1.2mm	7kg	2-100615
1.6mm	7kg	2-100616

MIG WELDING WIRE

XTRACORE 71

Xtracor 71 is a rutile type CO₂ shielded flux cored wire for welding of C/Mn steel. Recommended for all positional welding. Widely used in general engineering workshop. Use with CO₂ Gas.

Classification:

AWS A5.20 E71T-1C

Chemical Composition				
C	Mn	Si	S	P
0.04	1.33	0.40	0.01	0.02

Mechanical Properties		
Tensile Strength	Yield Strength	Elongation
580MPa	540MPa	28%



Size (mm)	Net Weight / Spool	Item Code
1.2mm	15kg	2-100701
1.6mm	15kg	2-100703

XTRACORE 71 H4

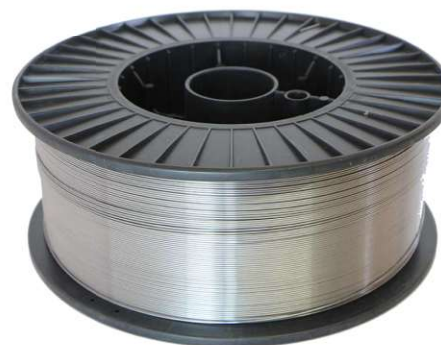
Xtracor 71 is a rutile type CO₂ shielded flux cored wire for welding of C/Mn steel. Recommended for all positional welding. Widely used in general engineering workshop. Use with CO₂ Gas.

Classification:

AWS A5.10 E71T-1C-H4

Chemical Composition				
Si	Mn	P	S	C
0.80	1.70	0.02	0.02	0.11

Mechanical Properties		
Tensile Strength	Yield Strength	Elongation
580MPa	540MPa	22%



Size (mm)	Net Weight / Spool	Item Code
1.2mm	15kg	2-1007031
1.6mm	15kg	2-1007032

E71T-11 GASLESS

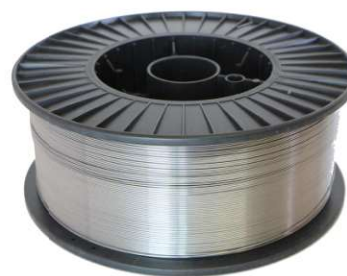
E71T-11 is a gasless, open-arc, tubular wire which is easy to use. Recommended to use with smaller Mig welder or areas where gas cylinder is not practical.

Classification:

AWS A5.20 E71T-11

Chemical Composition					
C	Mn	Si	S	P	Al
0.02	1.10	0.25	0.012	0.012	0.8

Mechanical Properties		
Tensile Strength	Yield Strength	Elongation
580MPa	540MPa	35%



Size (mm)	Net Weight / Spool	Item Code
0.8mm	1kg	2-100708
0.8mm	5kg	2-100709
0.9mm	1kg	2-100710
0.9mm	5kg	2-100711
1.2mm	5kg	2-100704
1.2mm	15kg	2-100705

MIG WELDING WIRE

CLADCOR 50

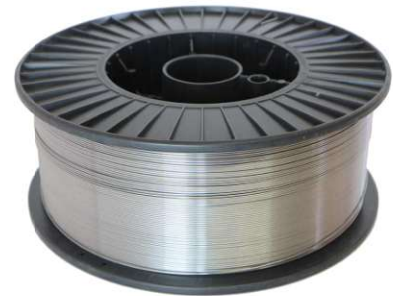
Cladcor 50 is a self-shielded flux cored wire depositing an extra high chrome carbide alloy steel. It is used to overlay surface subject to severe abrasion, moderate impact. Application for bucket teeth and lips, cement chutes, coal feeder screw, conveyor screw, crush jaws, dragline buckets.

Classification:

DINN 8555 MF10-GF-55-G

Chemical Composition			
C	Mn	Si	Cr
4.50	0.90	0.50	26.5

Mechanical Properties	
Hardness	
HRC 50-55	



Size (mm)	Net Weight / Spool	Item Code
1.2mm	15kg	2-100750

CLADCOR 60

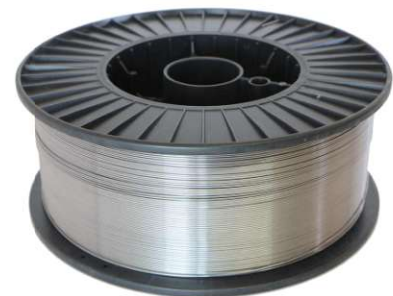
Cladcor 60 is a self-shielded flux cored wire depositing an extra high chrome carbide alloy steel. It used to overlay surface subject to extremely severe abrasion, not suggested to use with severe impact. Application for sugar cane hammer & knives, mining machinery, buckets, dipper teeth, coal crusher etc.

Classification:

DINN 8555 MF6-GF-60-G

Chemical Composition			
C	Mn	Si	Cr
4.90	1.50	1.1	29.5

Mechanical Properties	
Hardness	
HRC 55-60	



Size (mm)	Net Weight / Spool	Item Code
1.2mm	15kg	2-100760

S211 SILICON BRONZE

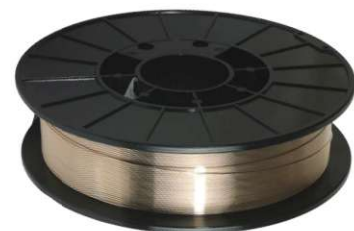
S211 Silicon Bronze is a pure copper wire with 3% silicon for welding wide range of copper alloys. Applications include wire for electrical components, tubes and heat exchanges, mig brazing for automotive body panels.

Classification:

AWS A5.7 ERCuSi-A

Chemical Composition		
Si	Mg	Cu
3.0	0.90	Bal

Mechanical Properties		
Tensile Strength	Elongation	Hardness
350 MPA	38%	80-90 HB



Size (mm)	Net Weight / Spool	Item Code
0.8mm	5kg	2-100801
1.0mm	5kg	2-100802
1.0mm	15kg	2-100805
1.2mm	15kg	2-100806

MIG WELDING WIRE

S215 ALUMINIUM BRONZE A2

S215 Aluminium Bronze A2 is a copper filler wire containing 10% aluminium, 1% iron. Can be used for joining dissimilar alloys. Eg, copper to steel, copper to cast iron, brass to steel etc. Applications include corrosion resistant pumps, casting, machinery parts for offshore, marine and mining industry.

Classification:

AWS A5.7 ERCuAl-A2

Chemical Composition			
Al	Mg	Fe	Cu
10%	0.8%	1.0%	Bal

Mechanical Properties		
Tensile	Elongation	Hardness
450 MPa	45%	90-120 HB



Size (mm)	Net Weight / Spool	Item Code
1.2mm	15kg	2-100810

S201 DEOXIDIZED COPPER

S201 Deoxidized Copper is a filler wire for a welding pure copper when maximum thermal and electrical conductivity are required. Applications include plate for chemical plant and moulds, rods and wires for electrical components, tubes for heat exchanges.

Classification:

AWS A5.7 ERCu

Chemical Composition		
Cu	Al	Fe
98%	0.01%	0.02%

Mechanical Properties	
Tensile	Hardness
230 MPa	60-80 HB



Size (mm)	Net Weight / Spool	Item Code
1.2mm	15kg	2-100831

MIG Torch & Accessories



MIG TORCH & ACCESSORIES

MB15 4M TORCH

The MB15 4m MIG welding torch is a compact and versatile tool for MIG welding. It features a 4-meter cable length and is equipped with a durable nozzle, contact tip, and trigger for precise wire control. This torch is compatible with various welding machines, offering convenience and efficiency in metal fabrication tasks.

Technical Data	
Product Code	11-100090
Rating	180A CO2
	150A Mixed Gas
Duty Cycle	60%
Wire Size	0.6 - 1.0 mm



MB25 4M TORCH

The MB25 4m MIG welding torch is a robust and reliable tool designed for MIG welding applications. With a 4-meter cable length, it provides flexibility and maneuverability during welding tasks. Equipped with a durable nozzle, contact tip, and trigger, this torch ensures precise wire control and consistent weld quality. Compatible with a range of welding machines, it offers versatility and ease of use for various metal fabrication projects.

Technical Data	
Product Code	11-100091
Rating	230A CO2
	200A Mixed Gas
Duty Cycle	60%
Wire Size	0.8 - 1.2 mm



MB36 4M TORCH

The MB36 4m MIG welding torch is a versatile and durable tool for MIG welding applications. With a 4-meter cable length, it provides ample reach and flexibility for welding tasks. Featuring a robust construction, including a sturdy nozzle, contact tip, and trigger mechanism, this torch ensures precise wire control and consistent weld quality. Compatible with various welding machines, the MB36 4m torch is suitable for a wide range of metal fabrication projects, offering reliability and efficiency.

Technical Data	
Product Code	11-100092
Rating	340A CO2
	320A Mixed Gas
Duty Cycle	60%
Wire Size	0.8 - 1.2 mm



MB40 4M TORCH

The MB40 4m MIG welding torch is a robust and versatile tool designed for professional welding applications. With a 4-meter cable length, it offers ample reach and flexibility for various welding tasks. Featuring a durable construction, including a sturdy nozzle, contact tip, and trigger mechanism, this torch ensures precise wire control and consistent weld quality. Compatible with a wide range of welding machines, the MB40 4m torch delivers reliability and efficiency in metal fabrication projects.

Technical Data	
Product Code	11-100093
Rating	400A CO2
	350A Mixed Gas
Duty Cycle	60%
Wire Size	0.8 - 1.6 mm



MIG TORCH & ACCESSORIES

MB501 4M TORCH (Water-Cooled)

The MB501 4m MIG welding torch is a high-quality tool built for professional welding applications. With a 4-meter cable length, it provides excellent reach and flexibility for various welding tasks. Featuring a sturdy construction, including a durable nozzle, contact tip, and trigger mechanism, this torch ensures precise wire control and consistent weld quality. Compatible with a wide range of welding machines, the MB501 4m torch offers reliability and efficiency in metal fabrication projects.



Technical Data	
Product Code	11-100094
Rating	500A CO2
	450A Mixed Gas
Duty Cycle	60%
Wire Size	0.8 - 1.6 mm

RB61 4M TORCH (Air-Cooled)

The RB61 4m MIG welding torch is a reliable tool designed for MIG welding applications. With a 4-meter cable length, it offers flexibility and maneuverability for various welding tasks. Featuring a durable construction, including a robust nozzle, contact tip, and trigger mechanism, this torch ensures precise wire control and consistent weld quality. Compatible with a range of welding machines, the RB61 4m torch provides efficiency and ease of use in metal fabrication projects.



Technical Data	
Product Code	11-100106
Rating	600A CO2
	550A Mixed Gas
Duty Cycle	100%
Wire Size	0.8 - 2.4 mm

MIG SPOOL GUN

A MIG spool gun is a specialized welding tool designed for welding aluminum or other soft metals. It consists of a pistol-grip handle connected to a small spool of welding wire, typically mounted on a handheld device or a separate feeder unit. The spool gun allows for precise control of the wire feed speed and minimizes the risk of wire tangling or birdnesting, making it ideal for welding applications requiring higher travel speeds and better control over heat input.



Technical Data	
Product Code	11-100085
Rating	130A CO2
Duty Cycle	30%
Spool Size	1Kg Weight, 4" Diameter
Wire Size	0.8 - 0.9 mm

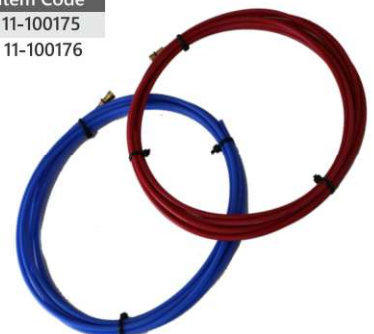
STEEL LINERS FOR MB501 4M

Item Code
11-100173



TEFLON LINERS 4M

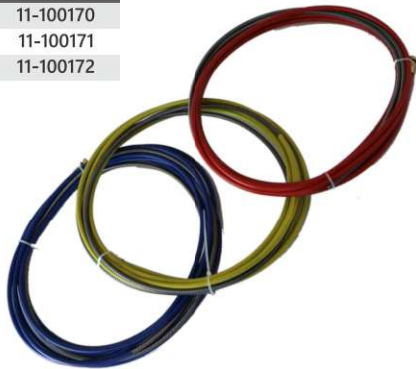
Colour	Length	Item Code
Blue	0.6 - 0.9mm	11-100175
Red	1.0 - 1.2mm	11-100176



MIG TORCH & ACCESSORIES

LINERS

Colour	Length	Item Code
Blue	0.6 - 0.9mm	11-100170
Red	1.0 - 1.2mm	11-100171
Yellow	1.2 - 1.6mm	11-100172



CO2 ARGON ADAPTOR

Item Code
11-100190



350A 4M TORCH EURO ADAPTOR

The 350A 4m Torch Euro Adaptor is a compact accessory that seamlessly connects welding torches to Euro-style connectors, facilitating efficient and versatile welding operations. With a sturdy build and convenient design, it ensures reliable performance for various welding tasks.

Item Code
11-100500



500A 4M TORCH EURO ADAPTOR

The 500A 4m Torch Euro Adaptor is a robust connector designed to seamlessly attach welding torches to Euro-style fittings, enabling versatile and efficient welding operations. With its durable construction and user-friendly design, it ensures reliable performance for a wide range of welding tasks.

Item Code
11-100501



MB24 TIP ADAPTOR

Item Code
11-1001501



MB24 SWAN NECK

Item Code
11-1001801



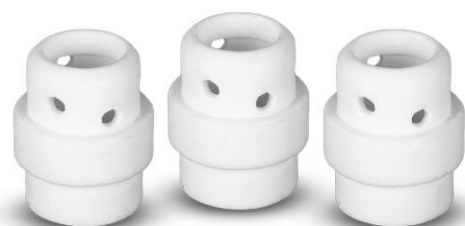
MB24 SHROUD

Item Code
11-1001401



MB24 GAS DIFFUSER

Item Code
11-100159



MIG TORCH & ACCESSORIES

CONTACT TIP M6

Use on MB15 / MB25 / MB36 Torch.

Item Code	
M6 0.8mm	11-100110
M6 0.9mm	11-100111
M6 1.0mm	11-100112
M6 1.2mm	11-100113
M6 1.4mm	11-100114



CONTACT TIP M8

Use on MB36 / MB40 / MB501 Torch.

Item Code	
M8 0.8mm	11-100120
M8 0.9mm	11-100121
M8 1.0mm	11-100122
M8 1.2mm	11-100123
M8 1.4mm	11-100124
M8 1.6mm	11-100125



CONTACT TIP M10

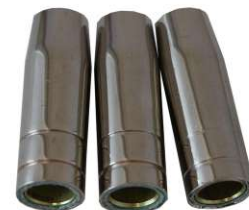
Use on RB61 Torch.

Item Code	
M10 1.2mm	11-100130
M10 1.4mm	11-100131
M10 1.6mm	11-100132



CONICAL SHROUD NOZZLE MB15

Item Code
11-100140



CONICAL SHROUD NOZZLE MB25

Item Code
11-100141



CONICAL SHROUD NOZZLE MB36

Item Code
11-100142



CONICAL SHROUD NOZZLE MB40

Item Code
11-100143



CONICAL SHROUD NOZZLE MB501

Item Code
11-100144



CONICAL SHROUD NOZZLE RB61

Item Code
11-100145



TIP ADAPTOR MB15 X M6

Item Code
11-100150



TIP ADAPTOR MB25 X M6

Item Code
11-100151



TIP ADAPTOR MB36

Item Code	
M6	11-100152
M8	11-100153



MIG TORCH & ACCESSORIES

TIP ADAPTOR MB40 X M8

Item Code
11-100154



TIP ADAPTOR MB501 X M8

Item Code
11-100155



TIP ADAPTOR RB61 M8

Item Code
11-100156



GAS DIFFUSER MB36

Item Code
11-100160



GAS DIFFUSER MB40

Item Code
11-100161



GAS DIFFUSER MB501

Item Code
11-100162



GAS DIFFUSER RB61

Item Code
11-100163



MB15 SWAN NECK

Product Code
11-100180



MB25 SWAN NECK

Product Code
11-100181



MB36 SWAN NECK

Product Code
11-100182



MB40 SWAN NECK

Product Code
11-100183



MB501 SWAN NECK

Product Code
11-100184



MIG TORCH & ACCESSORIES

PANASONIC TYPE MIG TORCH & SPARES

MIG WELDING PLIER 8#

Item Code
11-100410



CONTACT TIP M6

Size (mm)	Item Code
1.0mm Pan type	11-100510
1.2mm Pan type	11-100511
1.4mm Pan type	11-100512



350A & 500A GAS NOZZLE

Product Variation	Item Code
350A	11-100520
500A	11-100530



350A & 500A GAS DIFFUSER

Product Variation	Item Code
350A	11-100521
500A	11-100531



350A & 500A INSULATOR

Product Variation	Item Code
350A	11-100522
500A	11-100532



350A & 500A CONTACT TIP HOLDER

Product Variation	Item Code
350A	11-100523
500A	11-100533



350A & 500A SWAN NECK

Product Variation	Item Code
350A	11-100524
500A	11-100534



TIG Welding Wire



TIG WELDING WIRE

TIG ER70S-6

ER70S-6 is a copper coated solid wire for TIG welding process, weld with CO₂ or Argon CO₂ mix gas. Used in a wide range of structural steel, general fabrication. Good X-ray quality.

Classification:

AWS A5.18 ER70S-6

Chemical Composition (%)				
C	Mn	Si	S	P
0.08	1.50	0.9	0.02	0.02

Mechanical Properties		
Tensile - 600 MPa	Yield - 420 MPa	Elongation - 24%



Size (mm)	Net Weight/Unit	Code
1.6	5kg	3-100101
2.0	5kg	3-100102
2.4	5kg	3-100103
3.2	5kg	3-100104

STAINLUX ER316L

ER316L TIG filler wire is used for Mo bearing austenitic stainless steel with 1.5-3%Mo. 316/316L type stainless steel are widely used for good resistance of pitting, acid and general corrosion.

Classification:

AWS A5.9 ER316L

Chemical Composition (%)							
C	Mn	Si	Cr	Ni	Mo	S	P
0.01	1.4	0.5	19	13	2.5	0.01	0.015

Mechanical Properties		
Tensile - 605 MPa	Yield - 465 MPa	Elongation - 35%



Size (mm)	Net Weight/Unit	Code
1.2	5kg	3-100300
1.6	5kg	3-100301
2.4	5kg	3-100303
3.2	5kg	3-100304

STAINLUX ER308L

ER308L TIG wire is used for welding 18/8 stainless steel include 301, 302, 303, 304. Mainly used in brewery, food, architectural and general fabrication.

Classification:

AWS A5.9 ER308L

Chemical Composition (%)							
C	Mn	Si	Cr	Ni	Mo	S	P
0.02	1.8	0.6	20	10	0.1	0.02	0.015

Mechanical Properties		
Tensile - 605 MPa	Yield - 465 MPa	Elongation - 35%



Size (mm)	Net Weight/Unit	Code
1.6	5kg	3-100305
2.4	5kg	3-100307

STAINLUX ER309L

ER309L TIG wire is used for welding in high dilution conditions, dissimilar weld, buffer layers.

Classification:

AWS A5.9 ER309L

Chemical Composition (%)						
C	Mn	Si	Cr	Ni	S	P
0.02	1.7	0.5	24	13	0.01	0.015

Mechanical Properties		
Tensile - 590 MPa	Yield - 450 MPa	Elongation - 40%



Size (mm)	Net Weight/Unit	Code
1.6	5kg	3-100310
2.4	5kg	3-100312

TIG WELDING WIRE

STAINLUX ER2209

STAINLUX ER2209 TIG wire is used to weld duplex stainless steel pipe, plate, fittings, having 50:50 austenite with ferrite matrix.

Application:

Offshore oil/gas, chemical process, pipework.

Classification:

AWS A5.9 ER2209

Chemical Composition (%)					
C	Mn	Si	Cr	Ni	Mo
0.015	1.6	0.5	23	8.2	3.2

Mechanical Properties		
Tensile - 820 MPa	Yield - 660 MPa	Elongation - 32%



Size (mm)	Net Weight/Unit	Code
1.6	5kg	3-100320
2.4	5kg	3-100321

ALUWELD 4043

ALUWELD 4043 is a 95% aluminium, 5% silicon welding wire suitable for welding heat treatable base alloys of the 6XXX series. Should be used zirconiated tungsten electrode with pure argon, can be used as oxy-fuel gas welding with aluminium flux. Application in the construction and automotive industry.

Classification:

AWS A5.10 ER4043

Chemical Composition (%)			
Si	Mg	Mn	Al
5%	0.05	0.05	Bal

Mechanical Properties		
Tensile - 180 MPa	Yield - 120 MPa	Elongation - 8%



Size (mm)	Net Weight/Unit	Code
1.6	5kg	3-100401
2.4	5kg	3-100402
3.2	5kg	3-100403

ALUWELD 5356

ALUWELD 5356 is a 95% aluminium, 5% magnesium welding wire suitable for general purpose welding of the 5XXX series alloys. Should be used with zirconiated tungsten electrode with pure argon, can be used as oxy-fuel gas welding with aluminium flux. Application in shipping, bulk container, railway, and automotive industry.

Classification:

AWS A5.10 ER5356

Chemical Composition (%)				
Mg	Mn	Si	Fe	Al
5%	0.15	0.20	0.35	Bal

Mechanical Properties		
Tensile - 280 MPa	Yield - 130 MPa	Elongation - 18%



Size (mm)	Net Weight/Unit	Code
1.6	5kg	3-100404
2.4	5kg	3-100405
3.2	5kg	3-100406

ALUWELD 4047

ALUWELD 4047 is a 11-13% silicon filler wire which has a lower melting point and higher fluidity than 4043, to increase silicon in weld metal. Should be used with zirconiated tungsten electrode with pure argon, can be used as oxy-fuel gas welding with aluminium flux. Application for brazing aluminium sheet, automotive component, body panel, heat exchanger, etc.

Melting Point - 570-590° C

Classification:

AWS A5.10 ER4047

Chemical Composition (%)				
Mg	Mn	Si	Fe	Al
0.03	0.12	12	0.35	Bal

Mechanical Properties		
Tensile - 130 MPa	Yield - 60 MPa	Elongation - 5%



Size (mm)	Net Weight/Unit	Code
1.6	5kg	3-100410
2.4	5kg	3-100411
3.2	5kg	3-100412

TIG WELDING WIRE

S211 SILICON BRONZE TIG

S211 Silicon Bronze is a pure copper filler wire with 3% silicon for welding wide range of copper alloys. Applications include wire for electrical components, tubes and heat exchanges, Tig brazing for automotive body panels.

Classification:

AWS A5.7 ERCuSi-A

Chemical Composition (%)		
Mg	Si	Cu
0.9%	3.0	Bal

Mechanical Properties		
Tensile - 350 MPa	Elongation - 38%	Hardness - 80-90 HB



Size (mm)	Net Weight/Unit	Code
1.6	5kg	3-100504
2.4	5kg	3-100505
3.2	5kg	3-100506

CCR (R45) GAS ROD

CCR (R45) is a copper coated, low carbon oxy-fuel gas rod, widely used in general repairs for mild steel. Applications include exhaust pipes, hydraulic which thin plates to be joined.

Classification:

AR4WS A5.2 5

Chemical Composition (%)				
C	Mn	Si	S	P
0.08	0.05	0.10	0.02	0.02

Mechanical Properties		
Tensile - 550 MPa	Yield - 360 MPa	Elongation - 22%



Size (mm)	Net Weight/Unit	Code
1.6	4kg	3-100631
2.4	4kg	3-100632
3.2	4kg	3-100633

TIG Torch & Accessories



TIG TORCH & ACCESSORIES

WP-17V 4M

The WP-17V 4m welding torch is a versatile tool primarily utilized in TIG (Tungsten Inert Gas) welding processes. With a cable length of four meters, it provides ample reach and flexibility for various welding tasks. This torch is designed to deliver precise control and stability during welding operations, contributing to the production of high-quality welds. Its ergonomic design and durable construction make it suitable for both professional welders and hobbyists alike.

Technical Data	
Type of Cooling	Air-cooled
Gas	Argon
Rating	150A DC, 120A AC
Duty Cycle	35%
Tungsten Electrodes	0.5-2.4mm

Product Variation	Item Code
1 Piece with Trigger	12-100090-1
2 Piece no Trigger	12-100090-2



WP-26V 4M

The WP-26V 4M welding torch is a robust tool designed for TIG (Tungsten Inert Gas) welding applications. Its four-meter cable length provides ample reach, allowing welders to maneuver comfortably around workpieces. This torch is engineered for versatility, offering precise control and stability during welding operations. Its ergonomic design enhances user comfort, while its durable construction ensures reliability even in demanding welding environments. Whether used by professional welders or hobbyists, the WP-26V 4M torch delivers consistent performance and high-quality welds.

Technical Data	
Type of Cooling	Air-cooled
Gas	Argon
Rating	200A DC, 160A AC
Duty Cycle	35%
Tungsten Electrodes	0.5-4.0mm

Product Variation	Item Code
1 Piece with Trigger	12-100091-1
2 Piece no Trigger	12-100091-2



WP-26V 8M

The WP-26V 8M welding torch is a robust tool tailored for TIG (Tungsten Inert Gas) welding tasks, equipped with an extended eight-meter cable length. This extra length enhances maneuverability and flexibility around large work pieces or in hard-to-reach areas, making it suitable for various welding applications. Designed for durability and precision, this torch offers reliable performance and consistent weld quality, catering to the needs of professional welders and enthusiasts alike.

Technical Data	
Item Code	12-100092
Type of Cooling	Air-cooled
Gas	Argon
Rating	200A DC, 160A AC
Duty Cycle	35%
Tungsten Electrodes	0.5-4.0mm



WP-18V 8M

The WP-18V 8M welding torch is a durable tool designed for TIG (Tungsten Inert Gas) welding, featuring an extended eight-meter cable length. This extra length allows for increased maneuverability and accessibility, particularly useful for welding larger workpieces or in confined spaces. With a focus on precision and reliability, the WP-18V 8M torch ensures consistent weld quality, making it suitable for both professional welders and hobbyists seeking versatile and high-performance welding equipment.

Technical Data	
Item Code	12-100093
Type of Cooling	Water-cooled
Gas	Argon
Rating	350A DC, 250A AC
Duty Cycle	100%
Tungsten Electrodes	0.5-2.4mm
Min. Water Flow	1.5L/min
Gas Flow	7.20L/min



TIG TORCH & ACCESSORIES

TORCH BODY

The Torch Body is a key component of a TIG (Tungsten Inert Gas) welding torch, providing the structural framework and connection points for various other torch components.

Product Variation	Item Code
17V	12-100110
26V	12-100111



BACK CAP (LONG) 57Y02

Item Code
12-100112



BACK CAP (SHORT) 57Y04

Item Code
12-100113



CERAMIC GAS LENS NO 8 54N14

To be used with WP26V torch.

Item Code
12-100125



CERAMIC GAS LENS NO 7 54N15

To be used with WP26V torch.

Item Code
12-100126



CERAMIC GAS LENS NO 6 54N16

To be used with WP26V torch.

Item Code
12-100127



ALUMINA CERAMIC NOZZLES

To be used with WP17V / WP26V torch.

Type	Item Code	Type	Item Code
10N46 NO 8	12-100120	10N49 NO 5	12-100123
10N47 NO 7	12-100121	10N50 NO 4	12-100124
10N48 NO 6	12-100122		

TIG TORCH & ACCESSORIES

COLLETS

To be used with WP17V / WP26V / WP18V torch.

Size (mm)	Item Code
1.6mm 10N23	12-100130
2.4mm 10N24	12-100131
3.2mm 10N25	12-100132



COLLET BODY

To be used with WP17V / WP26V / WP18V torch.

Size (mm)	Item Code
1.6mm 10N31	12-100135
2.4mm 10N32	12-100136
3.2mm 10N28	12-100137



GAS LENS COLLET BODY

45V26 2.4mm

Item Code
12-100140



TUNGSTEN ELECTRODE 2% THORIATED

A tungsten electrode with 2% thoriated content is favored in TIG welding for its enhanced conductivity, arc stability, and longevity. It's ideal for welding high-heat metals like stainless steel and nickel alloys, offering consistent performance across various conditions.

Item Code	
1.6 x 150mm	12-100150
2.4 x 150mm	12-100151
3.2 x 150mm	12-100152
4.0 x 150mm	12-100153



TUNGSTEN ELECTRODE ZIRCONIATED

Zirconiated tungsten electrodes, containing zirconium, are commonly used in TIG welding for their resistance to contamination, improved arc stability, and longevity. Ideal for precise and clean welds, they excel in welding aluminum and magnesium alloys, maintaining stability at lower temperatures.

Item Code	
1.6 x 150mm	12-100155
2.4 x 150mm	12-100156
3.2 x 150mm	12-100157
4.0 x 150mm	12-100158



TUNGSTEN ELECTRODE LANTHANATED 2%

2% Lanthanated tungsten electrodes offer excellent arc starting and stability for both AC and DC welding. Highly versatile and non-radioactive, they provide a low burn-off rate and reliable performance for stainless steel and various alloys.

Item Code	
1.6 x 150mm	12-100160
2.4 x 150mm	12-100161
3.2 x 150mm	12-100162
4.0 x 150mm	12-100163

TUNGSTEN ELECTRODE LYZER (E3)

LYZER E3 electrodes feature a rare-earth oxide blend for superior arc starting and stability in both AC and DC welding. This high-performance, non-radioactive option offers a longer service life and remains a versatile choice for all metal types.

Item Code	
1.6 x 150mm	12-100170
2.4 x 150mm	12-100171
3.2 x 150mm	12-100172
4.0 x 150mm	12-100173

FEEDER PEN & SHARPENER

Item Code	
TIG Wire Feeder Pen	12-100145
Manual Tungsten Sharpener	12-100146

Brazing Wire & Flux



BRAZING WIRE & FLUX



S222 BRONZE BRAZING ROD

A widely used low fuming brazing and bronze welding rod depositing metal which has good tensile strength, this versatile brazing rod is ideally suited for sheet metal work such as motor body, as well as for copper and cast iron brazing.

Melting Range - 860° C-890° C

Classification:

AWS A5.27 RB CuZn-C



Chemical Composition (%)					
Cu	Mn	Si	Fe	Tin	Zn
60	0.3	0.15	0.8	0.9	Bal

Mechanical Properties	
Tensile - 460 MPa	Hardness - 125 HB

Size (mm)	Net Weight/Spool	Code
1.6 X 1000	10kg	5-100101
2.0 X 1000	10kg	5-100102
3.0 X 1000	10kg	5-100103

S222F FLUX COATED BRONZE BRAZING ROD

A general all-purpose flux coated bronze alloy used for bronze welding and brazing copper, cast iron, sheet metal. The low fuming brass rod is fast flowing and leaves minimal flux residue.

Melting Range - 860° C-890° C

Classification:

AWS A5.27 RB CuZn-C



Chemical Composition (%)					
Cu	Mn	Si	Fe	Tin	Zn
60	0.3	0.15	0.8	0.9	Bal

Mechanical Properties	
Tensile - 460 MPa	Hardness - 125 HB

Size (mm)	Net Weight/Spool	Code
2.0 X 500	5kg	5-100106
3.0 X 500	5kg	5-100107

SILVERBRAZE 20

A general purpose, cadmium-free silver brazing alloy, exhibits moderate ductility and slightly higher melting temperature than higher percentage of silver. Mainly used to braze copper and mild steel.

Melting Range - 690° C - 770° C

Classification:

DIN L-Ag20



Chemical Composition (%)		
Ag	Cu	Zn
20	40	34

Mechanical Properties	
Tensile - 470 MPa	

Size (mm)	Net Weight / Unit	Code
1.5 X 500	1kg	5-100200

BRAZING WIRE & FLUX

SILVERBRAZE 30

A general purpose, cadmium-free silver brazing alloy with good flow and good fillet forming quality. It produces high strength and ductile joints. Mainly used to braze copper and mild steel.

Melting Range - 670° C - 730° C

Classification:

DIN L-Ag30

Chemical Composition (%)		
Ag	Cu	Zn
30	38	32

Machanical Properties
Tensile - 505 MPa



Size (mm)	Net Weight / Unit	Code
1.5 X 500	1kg	5-100201

SILVERBRAZE 20F

A white flux coated, general purpose, cadmium-free silver brazing alloy, exhibits moderate ductility and slightly higher melting temperature than higher percentage of silver. Mainly used to braze copper and mild steel.

Melting Range - 690° C-770° C

Classification:

DIN L Ag20

Chemical Composition (%)		
Ag	Cu	Zn
20	40	35

Machanical Properties
Tensile - 470 MPa



Size (mm)	Net Weight/Spool	Code
1.5 X 500	1kg	5-100210

SILVERBRAZE 25F

Silverbraze 25F is a green flux-coated, cadmium-free silver brazing alloy offering excellent flow and high strength. This versatile alloy is ideal for joining a wide range of ferrous and non-ferrous metals, including copper and mild steel, where a slightly higher silver content is required for improved performance.

Melting Range - 680° C-760° C

Classification:

DIN L-Ag25

Chemical Composition (%)		
Ag	Cu	Zn
25	40	35

Machanical Properties
Tensile - 475 MPa



Size (mm)	Net Weight/Spool	Code
1.5 X 500	1kg	5-100210A

SILVERBRAZE 30F

A light blue coated, general purpose, cadmium-free silver brazing alloy with good flow and good fillet forming quality. It produces high strength and ductile joints. Mainly used to braze copper and mild steel.

Melting Range - 670° C-730° C

Classification:

DIN L-Ag30 / BS Ag16

Chemical Composition (%)		
Ag	Cu	Zn
30	38	34

Machanical Properties
Tensile - 480 MPa



Size(mm)	Net Weight/Unit	Code
1.5 X 500	1kg	5-100211

BRAZING WIRE & FLUX



SILVERBRAZE 40F

A yellow coated, general purpose, cadmium-free silver brazing alloy with higher strength, good flowing at lower temperature. Mainly used to braze copper and mild steel.

Melting Range - 650° C - 710° C

Classification:

DIN L-Ag40 / BS Ag20

Chemical Composition (%)		
Ag	Cu	Zn
40	30	28

Mechanical Properties	
Tensile - 500 MPa	



Size (mm)	Net Weight / Unit	Code
1.5 X 500	1kg	5-100212

SILVERBRAZE MINI PACK

MINI PAK is a low cost, convenient 6 sticks package for economic usage. Range includes Silverbraze 20F, Silverbraze 30F and Silverbraze 40F.



Type	Sticks / Unit	Code
20F	6	5-100215
30F	6	5-100216
40F	6	5-100217

COPPERBRAZE 1

Copperbraze 1 are a self-fluxing alloy that are recommended for brazing of copper to copper. Not suggested to braze nickel alloy or on ferrous materials due to the brittleness, and excessive vibration or movement. Copperbraze 1 is in a square shape for easy handling.

Melting Range - 710° C-800° C

Classification:

DIN 8513L-Cu7P

Chemical Composition (%)		
Ag	Cu	P
0	92.9	7.1



Size (mm)	Net Weight/Unit	Code
2.0 X 500	1kg	5-100300
3.0 X 500	1kg	5-100301

COPPERBRAZE 2

Copperbraze 2 are a self-fluxing alloy, containing 2%Ag, are recommended for brazing of copper to copper. The silver content possess greater ductility, can be used where significant vibration or movement. Copperbraze 2 is in a square shape for easy handling.

Melting Range - 645° C-740° C

Classification:

DIN 8513 L-Ag2

Chemical Composition (%)		
Ag	Cu	P
2	91	7



Size (mm)	Net Weight/Unit	Code
2.0 X 500	1kg	5-100302
3.0 X 500	1kg	5-100303

BRAZING WIRE & FLUX

BRONZE BRAZING FLUX

Bronze Brazing Flux is a white powdered flux with a melting point of 800° C, its recommended for use of brazing mild steel, copper, cast iron with Pinnacle S222 brazing rod.

50g/jar prepack available

Packing	Code
500g /Jar	5-100110



SILVER SOLDER FLUX

Silver Solder Flux is a white powdered flux with a melting point between 550-800° C, its recommended to use with Pinnacle Silverbraze 20, or Silverbraze 30 on all metals other than aluminium, magnesium or titanium.

50g/jar prepack available

Packing	Code
250g /Jar	5-100111



ALUMINIUM BRAZING FLUX

Aluminium Brazing Flux is a white powdered flux with a melting point of 550° C, use with filler rod of 4047 aluminium brazing alloy.

50g/jar prepack available

Packing	Code
250g /Jar	5-100112



Gas Cutting & Welding



WELDING & CUTTING OUTFIT

Capacity:

- Cut up to 150mm, welds up to 9mm steel

Features:

- Brass & Stainless Steel Construction.
- Torch handle with 2 stainless steel needle valves for fast, accurate flame adjustment.
- Forged and extruded brass for durability.
- Plastic toolbox package.
- Includes wrench.

*Complete outfit contents

Conform to:

EN ISO 5172



Code	Torch Handle	Cutting Attach.	Mixer	Oxygen Reg.	Acetylene Reg.	Flint Lighter	Nozzle Cleaner	Swaged Nozzle	Swaged Nozzle	Swaged Nozzle	Twin Hose	Goggle
10-100110	<input checked="" type="checkbox"/>	<input checked="" type="checkbox"/>	<input checked="" type="checkbox"/>	<input checked="" type="checkbox"/>	<input checked="" type="checkbox"/>	<input checked="" type="checkbox"/>	<input checked="" type="checkbox"/>	3	5	7	<input checked="" type="checkbox"/>	<input checked="" type="checkbox"/>

*Flash back arrestor optional

WELDING & CUTTING OUTFIT FOR PORTPAK

Capacity:

- Cut up to 50mm, welds up to 6mm steel.

Features:

- Brass & Stainless Steel Construction.
- Regulators with safety relief valve for safe operation.
- Forged and extruded brass for durability.
- Chrome plated cutting attachment.
- Easy to carry Aluminium box.

*Complete outfit contents

Conform to:

EN ISO 5172



Code	Torch Handle	Cutting Attach.	Oxygen Reg.	Acetylene Reg.	Nozzle Cleaner	AFN Nozzle	Brazing Nozzle
10-100109	<input checked="" type="checkbox"/>	<input checked="" type="checkbox"/>	<input checked="" type="checkbox"/>	<input checked="" type="checkbox"/>	<input checked="" type="checkbox"/>	2	2

*Flash back arrestor optional

PORTABLE STRAIGHT LINE GAS CUTTER

Capacity:

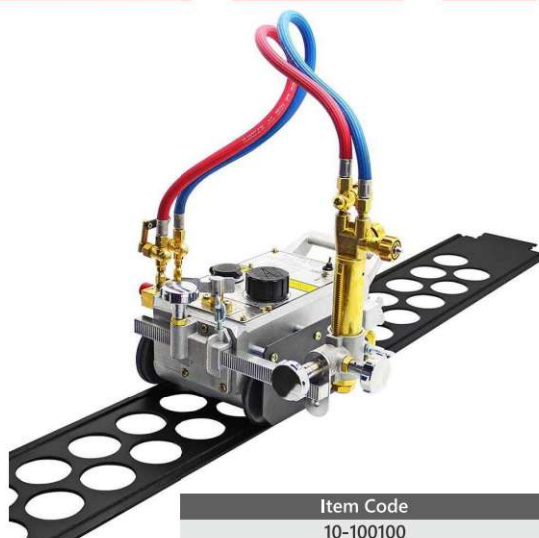
- Cut up between 6-100mm, depending on Nozzle.

Features:

- Brass & Stainless Steel Construction.
- Control panel with integrated wheel brake, forward and backward, cutting speed adjustment.
- Angle adjustment scale, can adjust the cutting head angle.
- The front end of the cutting machine is designed with a hand grip.
- Cutting speed: 150mm - 800mm/min.
- Cutting angle: 0 - 45°

Portable & Economical: Small in size, light weight, easy to carry. Compared with other cutting methods, the cost use is low with good results.

Circular orbit can also be selected according to their own needs.



Item Code
10-100100

SINGLE STAGE OXYGEN REGULATOR

- Single stage construction.
- Forged brass body & bonnet for maximum strength.
- Neoprene diaphragms.
- No solder joints for easy maintenance.
- Safety relief valve is standard.

Conform to:
EN2503

Code	10-100160
Inlet Pressure	0-28Bar
Working Pressure	0-2Bar
Flow Rate	80L / min



SINGLE STAGE ACETYLENE REGULATOR

- Single stage construction.
- Forged brass body & bonnet for maximum strength.
- Neoprene diaphragms.
- No solder joints for easy maintenance.
- Safety relief valve is standard.

Conform to:
EN2503

Code	10-100161
Inlet Pressure	0-28Bar
Working Pressure	0-2Bar
Flow Rate	80L / min



MULTI STAGE OXYGEN REGULATOR

- Double stage construction.
- Forged brass body & bonnet for maximum strength.
- Neoprene diaphragms.
- First Stage reduce fill cylinder pressure by +/- 90%.
- Safety relief valve is standard.

Conform to:
EN2503

Code	10-100162
Inlet Pressure	0-315Bar
Working Pressure	0-14Bar
Flow Rate	650L / min



MULTI STAGE ACETYLENE REGULATOR

- Double stage construction.
- Forged brass body & bonnet for maximum strength.
- Neoprene diaphragms.
- First Stage reduce fill cylinder pressure by +/- 90%.
- Safety relief valve is standard.

Conform to:
EN2503

Code	10-100163
Inlet Pressure	0-315Bar
Working Pressure	0-14Bar
Flow Rate	650L / min



ARGON FLOWMETER

- Single stage construction
- Forged brass body & bonnet for maximum strength
- Neoprene diaphragms
- Accurate regulator for gas flow
- MIG/TIG welding application

Conform to:
EN2503

Code	10-100166
Inlet Pressure	0-315Bar
Working Pressure	Preset
Flow Rate	1-25L / min



LPG REGULATOR WITH GAUGE

- Single stage construction
- Forged brass body & bonnet for maximum strength
- No solder joints for easy maintenance
- Safety relief valve is standard

Conform to:
EN2503

Code	10-100170A
Inlet Pressure	0-28Bar
Working Pressure	0-2Bar
Flow Rate	80L / min



UNIVERSAL CUTTING TORCH BOC TYPE

- British type.
- Heavy duty cutting up to 300mm steel.
- Stainless steel tube for greater heat resistance.
- Stainless steel red coated handle.
- Use ANM, ANME, PNM, PMME nozzle.

Conform to:
EN5172

Code	10-100115
Length	500mm
90° Head	



CUTTING ATTACHMENT

- British type.
- Cuts up to 200mm steel.
- Stainless steel tubes for strength.
- Forged brass head and body.
- Press lever for easy cutting use.
- Use with ANM, ANME, PNM, PNME nozzle.

Conform to:
EN5172

Item Code
10-100126
90° Head



BOC TYPE SHANK TORCH HANDLE

- BOC type.
- Quality construction.
- Comfortable grip.
- Versatile use.

Conform to:
EN5172

Item Code
10-100125



OXYGEN, ACETYLENE GAS HOSE

The construction of pinnacle gas hose:

- Liner: black NR/SBR.
- Reinforcing: woven polyester yarn.
- Cover: red/blue UV resistant NR/SBR.
- Temperature range: 20° -90° .



Code	Bore	OD	Wall Thickness	Burst Pressure	Packaging
10-100185 Oxygen	8 mm	+/- 16.3mm	4.1mm	7000 kpa	100m/roll
10-100186 Acetylene	8 mm	+/- 16.3mm	4.1mm	7000 kpa	100m/roll

ORANGE LPG GAS HOSE

- Low pressure applications for catering, heating.
- Max pressure 1750 kpa.
- Durable SBR construction.
- High UV resistant.



Code	Bore	OD	Wall Thickness	Burst Pressure	Packaging
10-100187	8 mm	+/- 16.3mm	4.1mm	7000 kpa	100m/roll

PARALLEL HOSE CLAMP 8MM



Item Code
10-100190

OETIKER HOSE CLAMP



Size	Item Code
13 X 15mm	10-100191
15 X 18mm	10-100192

HOSE ASSEMBLY 10M



Type	Item Code
Oxygen	10-100195
Acetylene	10-100196

HOSE KIT 3/8" BSP



Direction	Item Code
RH	10-100193
LH	10-100194

G6 HOSE CLAMP

- Mild Steel
- Width: 8mm

Size	Item Code
8-12mm	17-GRH240A
10-16mm	17-GRH240B
13-19mm	17-GRH240C
16-25mm	17-GRH240D



ANM CUTTING NOZZLE

- Use with pinnacle universal cutting torch & cutting attachment.
- Use with oxygen & acetylene gases.



Size	Code	Cutting Thickness (mm)	Oxygen Pressure (Bar)	Acetylene Pressure (Bar)	Length (mm)
ANM 0.8 (1/32")	10-100200	3-6	1.5	0.5	75
ANM 1.2 (3/64")	10-100201	6-12	2.0	0.5	75
ANM 1.6 (1/16")	10-100202	12-75	2.5	1.0	75
ANM 2.0 (5/64")	10-100203	75-100	3.0	1.0	75
ANM 2.4 (3/32")	10-100204	100-150	3.5	1.5	75
ANM 3.2 (1/8")	10-100205	150-300	4.0	1.5	75

ANME CUTTING NOZZLE

- Use with pinnacle universal cutting torch & cutting attachment.
- Use with oxygen & acetylene gases.



Size	Code	Cutting Thickness (mm)	Oxygen Pressure (Bar)	Acetylene Pressure (Bar)	Length (mm)
ANME 0.8 (1/32")	10-100210	3-6	1.5	0.5	88
ANME 1.2 (3/64")	10-100211	6-12	2.0	0.5	88
ANME 1.6 (1/16")	10-100212	12-75	2.5	1.0	88
ANME 2.0 (5/64")	10-100213	75-100	3.0	1.0	88
ANME 2.4 (3/32")	10-100214	100-150	3.5	1.5	88
ANME 3.2 (1/8")	10-100215	150-300	4.0	1.5	88

PNM CUTTING NOZZLE

- Use with pinnacle universal cutting torch & cutting attachment.
- Use with oxygen & LPG gases.



Size	Code	Cutting Thickness (mm)	Oxygen Pressure (Bar)	Acetylene Pressure (Bar)	Length (mm)
PNM 0.8 (1/32")	10-100300	3-6	1.5	0.5	75
PNM 1.2 (3/64")	10-100301	6-12	2.0	0.5	75
PNM 1.6 (1/16")	10-100302	12-75	2.5	1.0	75
PNM 2.0 (5/64")	10-100303	75-100	3.0	1.0	75
PNM 2.4 (3/32")	10-100304	100-150	3.5	1.5	75
PNM 3.2 (1/8")	10-100305	150-300	4.0	1.5	75

PNME CUTTING NOZZLE

- Use with pinnacle universal cutting torch & cutting attachment.
- Use with oxygen & LPG gases.



Size	Code	Cutting Thickness (mm)	Oxygen Pressure (Bar)	Acetylene Pressure (Bar)	Length (mm)
PNME 0.8 (1/32")	10-100310	3-6	1.5	0.5	92
PNME 1.2 (3/64")	10-100311	6-12	2.0	0.5	92
PNME 1.6 (1/16")	10-100312	12-75	2.5	1.0	92
PNME 2.0 (5/64")	10-100313	75-100	3.0	1.0	92
PNME 2.4 (3/32")	10-100314	100-150	3.5	1.5	92
PNME 3.2 (1/8")	10-100315	150-300	4.0	1.5	92

6290-NX CUTTING NOZZLE (Harris style)

- Use with Harris type 62 series torch.
- Use with oxygen & LPG gases.



Size	Code	Cutting Thickness (mm)	Oxygen Pressure (Bar)	Acetylene Pressure (Bar)	Length (mm)
000NX	10-100348	1-5	1.5	0.5	75
00NX	10-100349	5-10	2.0	0.5	75
0NX	10-100350	10-15	2.5	1.0	75
1NX	10-100351	15-25	3.0	1.0	75
2NX	10-100352	25-50	3.5	1.5	75
3NX	10-100353	50-100	4.0	1.5	75
4NX	10-100354	100-150	4.0	1.5	75
5NX	10-100355	150-200	4.0	1.5	75

2890-F CUTTING NOZZLE (Harris style)

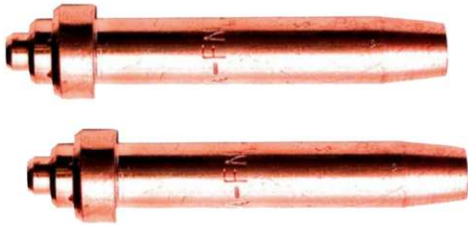
- Use with Harris type 2800L series torch.
- Use with oxygen & acetylene gases.



Size	Code	Cutting Thickness (mm)	Oxygen Pressure (Bar)	Acetylene Pressure (Bar)	Length (mm)
0F	10-100360	0-3	1.0-1.5	0.2	78
1F	10-100361	3-10	1.0-1.5	0.2	78
2F	10-100362	10-50	1.5-2.5	0.3	78
3F	10-100363	50-100	3.0-4.5	0.5	78
4F	10-100364	100-125	5.0-5.5	0.7	78
5F	10-100365	125-150	5.5-6.0	0.7	78

AFN CUTTING NOZZLE

- Use with Afrox type portapak cutting attachment.
- Use with oxygen & acetylene gases.



Size	Code	Cutting Thickness (mm)	Oxygen Pressure (Bar)	Acetylene Pressure (Bar)	Length (mm)
AFN-1	10-100370	1-3	1.0	0.5	51
AFN-2	10-100371	3-8	1.5	0.5	51
AFN-3	10-100372	8-20	2.0	0.5	51

SWAGED WELDING NOZZLE

- Use with Pinnacle British type torch handle 10-100125.
- Use with Pinnacle mixer 10-100130.



Size	Code	Cutting Thickness (mm)	Oxygen Pressure (Bar)	Acetylene Pressure (Bar)	Length (mm)
3	10-100150	2.0	1.0	0.15	92
5	10-100151	2.6	1.0	0.15	92
7	10-100152	3.2	1.0	0.15	92

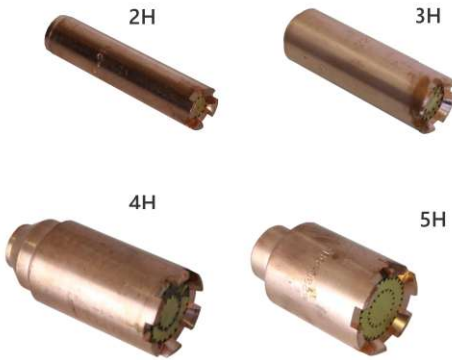
FLASH BACK ARRESTER

- Non-return valve designed to prevent reverse flow and mixing oxygen and fuel gases accidentally.



Gas	Code	Use With	Max Flow L/H	Inlet	Outlet
Oxygen	10-100175	Torch	7000	BSP 3/8" RH	BSP 3/8" RH
Acetylene	10-100176	Torch	2600	BSP 3/8" LH	BSP 3/8" LH
Oxygen	10-100177	Regulator	7000	BSP 3/8" RH	BSP 3/8" RH
Acetylene	10-100178	Regulator	2600	BSP 3/8" LH	BSP 3/8" LH

LPG HEATING NOZZLE



Type	Code	Gas Consumption (kg/h)				
		Heat Output (KJ)	Oxygen Low	Oxygen High	LPG Low	LPG High
2H	10-100139	108,000	6.37	11.54	2.36	4.14
		198,000				
3H	10-100140	193,000	11.01	21.88	4.14	8.08
		380,000				
4H	10-100141	249,000	14.06	24.66	5.32	9.06
		428,000				
5H	10-100142	265,000	16.84	37.13	6.31	13.79
		652,000				

MIXER



Item Code
10-100130

HIGH PRESSURE MIXER TYPE 2



Item Code
10-100131

NOZZLE CLEANER



Item Code
10-100103

REPLACEMENT FOR FLINT LIGHTER



Item Code
10-100102

FLINT LIGHTER



Item Code
10-100101

STAINLESS LANCE TUBE



Size	Item Code
600mm	10-100132
1000mm	10-100133

SINGLE GAS TROLLEY



Item Code
10-100111

DOUBLE GAS TROLLEY



Item Code
10-100112

LPG GAS TROLLEY



Item Code
10-100113

OXYGEN - LPG GAS TROLLEY



Item Code
10-100114

RED DEVIL LPG REG. HIGH PRESSURE



Item Code
10-100171

LOW PRESSURE LPG REGULATOR



Item Code
10-100170

Y PIECE



Type	Item Code
Oxygen	10-100179
Acetylene	10-100180

INLET STEM (BULL NOSE)



Item Code
10-100400

BULL NOSE NUT



Type	Item Code
Oxygen RH	10-100401
Acetylene LH	10-100402

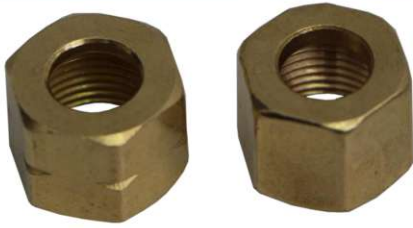
TAIL PIECE 8 MM 3/8"



Item Code
10-100405

GAS WELDING & CUTTING

TAIL NUT 3/8"



Type	Item Code
Oxygen RH	10-100403
Acetylene LH	10-100404

NOZZLE NUT

*Use with universal cutting torch



Item Code
10-100406

TAIL PIECE 8MM 9/16"



Item Code
10-100412

TAIL NUT 9/16"



Type	Item Code
Oxygen RH	10-100410
Acetylene LH	10-100411

BLOW TORCH MANUAL



Item Code
10-100601

BLOW TORCH AUTOMATIC



Item Code
10-100602

GAS CARTRIDGE 190 PIERCEABLE



Item Code
10-100603

HOSE SET FOR HEAT TORCH + FITTING

5m Hose



Item Code
10-100610C

LPG HEATING TORCH 800-1000MM



Size	Item Code
800mm	10-100610A
1000mm	10-100610B

Plasma Torch & Accessories



PLASMA TORCH & ACCESSORIES

PANASONIC TYPE

PT31 - 5M

The PT31 - 5m welding torch provides ample reach and flexibility for welding tasks in diverse environments. With its ergonomic design and durable construction, this torch offers comfortable handling and reliable performance, making it suitable for a wide range of welding applications across industries.



Technical Data	
Item Code	14-100090
Rating	40A
Duty Cycle	60%
Cutting Capacity	12mm mild steel
Air Pressure	0.35-0.45 Mpa

PT31 CUTTING TIP SHORT



Item Code
14-100102

PT31 ELECTRODE SHORT



Item Code
14-100103

PT31 CUTTING TIP LONG



Item Code
14-100104

PT31 ELECTRODE LONG



Item Code
14-100105

PT31 GAS DIFFUSER



Item Code
14-100106

PT31 GAS SHIELD CUP



Item Code
14-100107

PLASMA TORCH & ACCESSORIES

PANASONIC TYPE

P60 (SG55) - 5M

The P60 (SG55) - 5M is renowned for its durability and reliability in various welding applications. With its ergonomic design and efficient performance, this torch ensures precise and effective welding, making it a preferred choice for professionals across industries.

Technical Data	
Item Code	14-100190
Rating	60A
Duty Cycle	60%
Cutting Capacity	22mm mild steel
Air Pressure	0.35-0.45 Mpa



P60 ELECTRODE



Item Code
14-100201

P60 NOZZLE (TIP)



Item Code
14-100202

P60 SHIELD CUP



Item Code
14-100203

P60 SPACE GUIDE



Item Code
14-100204

PLASMA TORCH & ACCESSORIES

PANASONIC TYPE

P80 - 5m

The P80 - 5m welding torch stands out as a robust and dependable tool, boasting a generous five-meter cable length that offers extended reach and flexibility for welding tasks across various industries. Engineered with a focus on durability and precision, this torch is meticulously crafted to withstand the rigors of professional welding environments while delivering consistent and reliable performance. Its ergonomic design ensures comfortable handling, making it an indispensable choice for welders seeking superior quality and efficiency in their welding operations.



Technical Data	
Item Code	14-100290
Rating	80A
Duty Cycle	60%
Cutting Capacity	35mm mild steel
Air Pressure	0.35-0.45 Mpa

P80 ELECTRODE



Item Code
14-100301

P80 NOZZLE TIP



Item Code
14-100302

P80 SHIELD CUP



Item Code
14-100303

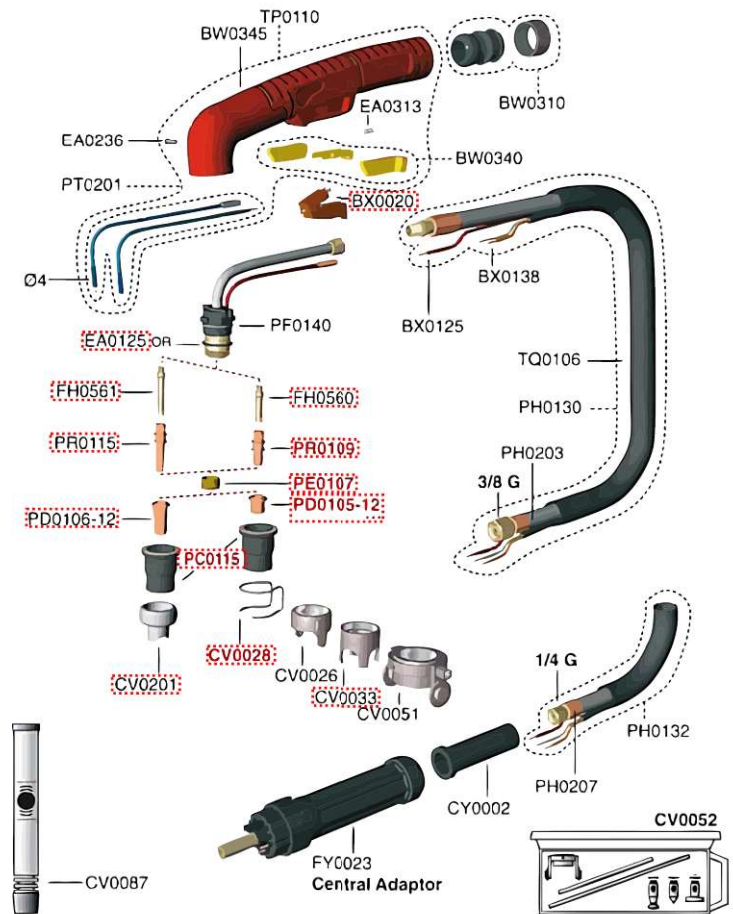
P80 SITE WHEEL



Item Code
14-100304

A81 SPARES

Trafimet Type A81



Description	Item Code
A81 5M TORCH	14-100401
Trigger	14-BX0020
Stand Off Guide	14-CV0028
Four Pins Crown Shield	14-CV0033
Long Contact Cutting Attachment	14-CV0201
Diffuser	14-FH0560
Long Diffuser	14-FH0561
Outside Nozzle A81	14-PC0115
Tip 1.0 A81	14-PD0105-10
Tip 1.2 A81	14-PD0105-12
Long Tip 1.2 A81	14-PD0106-12
Air Diffuser A81	14-PE0107
Long Life Electrode A81	14-PR0109
Long Life Electrode A81 New Type	14-PR0115
O-Ring	

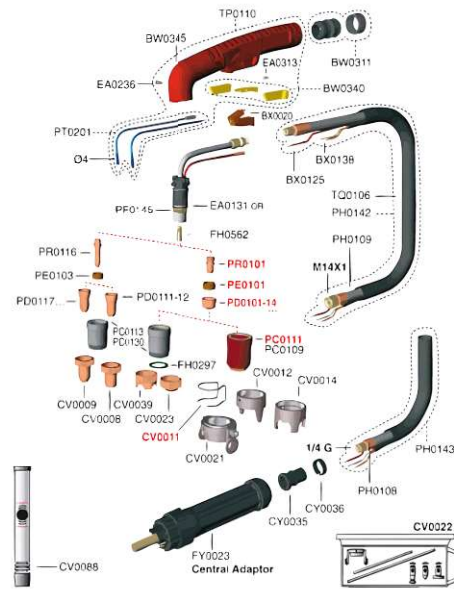
PLASMA TORCH & ACCESSORIES

TRAFIMET TYPE

A101 SPARES



Trafimet Type A101



Description	Item Code
A101 5M TORCH	14-100402
Contact Cutting Attachment	14-CV0008
Long Contact Cutting Attachment	14-CV0009
Stand Off Guide	14-CV0011
Two Pins Crown Shield	14-CV0012
Four Pins Crown Shield With Insulator	14-CV0014
Carriage A101	14-CV0021
Contact Cutting Attachment	14-CV0023
Four Pins Crown Shield with Insulator	14-CV0039
O-Ring	14-EA0131
Diffuser	14-FH0562
Outside Nozzle A101	14-PC0109
Heavy Duty Nozzle A101	14-PC0111
Contact Cutting Nozzle A101	14-PC0113
Contact Cutting Nozzle Long Life A101	14-PC0130
Tip 1.1 A101/A141	14-PD0101-11
Tip 1.4 A101/A141	14-PD0101-14
Tip 1.7 A101/A141	14-PD0101-17
Long Tip A101/A141	14-PD0111
Long Tip 1.4 A101/A141	14-PD0117-14
Long Tip 1.7 A101/A141	14-PD0117-17
Long Tip 1.9 A101/A141	14-PD0117-19
Air Diffuser A101/A141	14-PE0101
Air Diffuser A151	14-PE103
Electrode A101/141	14-PR0101
Long Electrode A101	14-PR0116

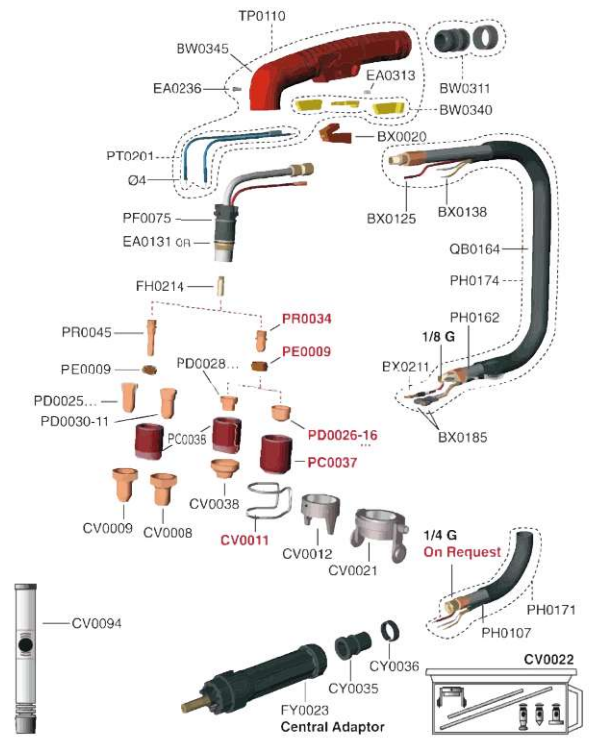
PLASMA TORCH & ACCESSORIES

TRAFIMET TYPE

A141 SPARES



Trafimet A141



Description	Item Code
A141 5M TORCH	14-100403
Stand Off Guide	14-CV0011
Two Pins Crown Shield	14-CV0012
Gouging Shield	14-CV0013
Four Pins Crown Shield With Insulator	14-CV0014
Contact Cutting Attachment	14-CV0023
Four Pins Crown Shield With Insulator	14-CV0039
O-Ring	14-EA0131
Diffuser	14-FH563
Heavy Duty Nozzle A141	14-PC0102
Contact Cutting Nozzle A141	14-PD0103
Tip 1.4 A101/A141	14-PD0101-14
Tip 1.7 A101/A141	14-PD0101-17
Tip 1.9 A101/A141	14-PD0101-19
Long Tip 1.4 A101/A141	14-PD0117-14
Long Tip 1.7 A101/A141	14-PD0117-17
Long Tip 1.9 A101/A141	14-PD0117-19
Long Tip A101/A141	14-PD0111
Air Diffuser A101/A141	14-PE0101
Air Diffuser A151	14-PE0103
Electrode A101/141	14-PRO101

Sub ARC Wire & Flux



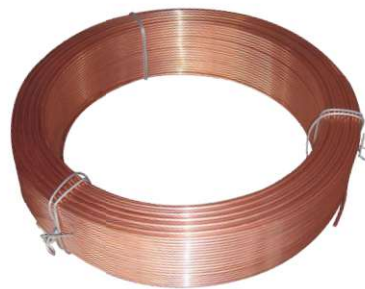
SUBMERGED ARC WIRE & FLUX

EM12K

EM12K is a copper coated low carbon, medium manganese wire for joining C/Mn steel. Its widely used in structural steel work, shipbuilding, pressure vessel. The wire is suitable for both single-pass and multi-pass for welding butt and fillet joints where higher mechanical properties are required.

Classification:
AWS A5.17 EM12K

Chemical Composition (%)				
C	Mn	Si	P	S
0.10	1.0	0.15	0.01	0.02



Size (mm)	Net Weight/Spool	Item Code
2.4	25kg	3-100601
3.2	25kg	3-100602
4.0	25kg	3-100603
5.0	25kg	3-100604
2.4	+300kg drum	3-100605
3.2	+300kg drum	3-100606

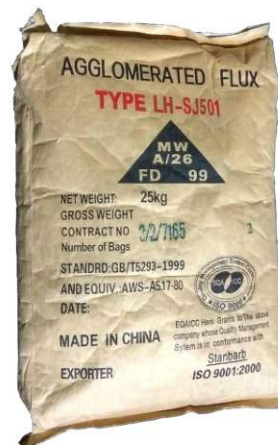
SJ501 FLUX

Sj501 is an agglomerated flux with Mn and Si additions, a versatile flux with excellent weldability and easy slag removal, highly resistant to cracks and porosity. SJ501 is ideal for one-sided and double-sided welding. Its recommended for welding gas bottles, truck wheels, structural steel, mining wheels, boiler making ETC. Welding with damp flux can cause porosity, re-dry flux approximately 2 hours at 300° C before welding.

Classification:
AWS A5.17 F7A2-EM12K

Chemical Composition (%)			
SiO ₂ +TiO ₂	Al ₂ O ₃ +MnO	CaF ₂	S
30	55	7	≤0.03

Mechanical Properties		
Tensile - 520 MPa	Yield - 430 MPa	Elongation - 29%



Net Weight/Unit	Item Code
25kg	3-100621

GOUGING CARBON

Pinnacle gouging carbon is designed for air carbon gouging metal removal process, contain a precise blend of carbon and graphite that produce the most efficient metal removal performance.

Size (mm)	Type	Item Code
5.0	non-joint	4-100100
6.5	non-joint	4-100101
8.0	non-joint	4-100102
9.0	non-joint	4-100103





Pinnacle

Pinnacle MS-499

103

Pinnacle

Pinnacle



Located In:

Johannesburg · Durban · Cape Town · Gqeberha · Rustenburg · Harare · Bulawayo
Lusaka · Kitwe · Windhoek · Gaborone · Maputo · Lubumbashi · Dar es Salaam
Eswatini



Pinnacle

Johannesburg Head Office:

451 Bergvlei Road,
Wadeville, Germiston,
Johannesburg, 1428

Tel: +27 11 824 0001

E-mail: sales1@pinnacleholding.co.za

Durban Branch:

Unit H5 Pinemead Industrial Park,
14 Trafford Road,
Westmead
Durban

Tel: +27 31 700 1655 | +27 31 700 1037

E-mail: henri@pinnacleholding.co.za

Cape Town Branch:

Unit 1 East End Prime Park,
Printers way,
Montague Gardens
Cape Town

Tel: +27 21 555 4287

E-mail: cptsales@pinnacleholding.co.za

Gqeberha Branch:

Unit 2, Mimosa Corner Business Park,
Cnr Cactus & Mimosa Road,
Fairview
Gqeberha

Tel: +27 41 001 3601

E-mail: neville@pinnacleholding.co.za